

# Te Tohu a Toi

# STATE OF THE ARTS

South Taranaki Arts Bulletin #44

Winter 2021

| [Art News](#) | [Opportunities](#) | [Exhibitions](#) | [Art Events](#) |

Kia ora koutou,

I hope this finds you all happy and well, coming into our colder months. Winter can be a reflective time and I find myself looking back to where we were this time last year, following the uncertainties related to the Covid-19 lock-down in Aotearoa. I am grateful for the security and freedom we have been able to experience here, especially when considering the long term effects to friends and family in other parts of the world. Kia kaha.

June signals the start of the Māori New Year period, named **Puanga** in the Taranaki/Whanganui regions due to the stars that are visible from our specific viewpoint. We have many opportunities to learn and celebrate within our communities such as the *Puanga Koniahī* events in Pātea and the *Puanga Kai Rau Festival* at Parihaka. Our Cultural Services Librarian at STDC has developed an exciting Puanga Roadshow this year, touring our seven LibraryPlus to educate and inspire school students with local stories and creative activities.

The **Lysaght Watt Art Awards** were held on Saturday 22 May in Hāwera, seeing a record number of high quality entries in both the 2D and 3D sections. Congratulations to all entrants, the winners and to all the voluntary committee members who worked so hard to make it happen. Next up is the Taranaki National Art Awards in Ōpunakē, entries are now open.



*Lysaght Watt Gallery Award - Supreme & 3D Award winner, by Jeanette Verster from New Plymouth*

We are fortunate in South Taranaki to have a diverse suite of **hand-on creative workshops** offered by community and private galleries and studios over the next few months. These include Creative Fibre workshops at the Village Gallery in Eltham, Hip-Hop Dance classes for youth in Hāwera, visual and performing arts workshops for adults and youth at Gallery Pātea, harakeke weaving at Kākano Ōpunakē, West African Drumming workshops in Eltham and felting and basket weaving at out of the blue studio on the coast. Spoilt for choice! Check the listings in this edition for more details and to register – don't miss out on these awesome opportunities.

Please continue to support and enjoy our local artists, galleries, groups, projects and events. Get in touch with me via email if you need advice or support with applications or help to realise a creative project. Take care and keep creating! Ngā mihi,

*Michaela*

Michaela Stoneman | Arts Co-ordinator | South Taranaki District Council | 0800 111 323  
[michaela.stoneman@stdc.govt.nz](mailto:michaela.stoneman@stdc.govt.nz) | [www.southtaranaki.com](http://www.southtaranaki.com)



## South Taranaki Creative Communities Funding

The CCS Allocation Committee met on Thursday 29 April to consider 18 applications, requesting a total of \$32,824, with \$26,316 funds available. 17 successful projects received \$22,993, as outlined below:

**Rosanne Oakes: The Locals \$897** - An exhibition, performance and workshops highlighting Pātea and its talented locals.

**Stratford Camera Club: Photography from the Stratford Camera Club \$200**

The Stratford Camera Club exhibition in South Taranaki, with a practical workshop.

**Nikki Watson: Western African Drum + Dance Weekend \$610** - To bring Koffie Fugah for a weekend of workshops of African Drum + Dance at the Eltham Presbyterian Campground.

**Jenni Corbett: Paint, Pastel and Models \$1,700** - To provide adult and children's art classes in Waverley and Pātea.

**Dimmie Danielewski: Proud Aotearoa \$726** - An art exhibition with LGBTQIA+ artists from around Aotearoa.

**Hāwera High School: Musical (Footloose) \$1,000** - Musical production performed by students of Hāwera High School.

**Ōhawe Creative Collective: Exhibition and Workshops \$1,325** - To run an exhibition at the local hall for 10 days and run workshops including mixed media and printing.

**Amy-Louise Thompson: Artwork for Ōhawe Bus Shelter \$800** - To paint artwork on two bus shelters in Ōhawe with the help of a local student. Design will be based on children's artworks created in a local competition.

**Theatre Trust Singers: Opportunities for the Choir \$660** - To purchase specialised backing tracks and sheet music.

**Kiri McGuire: Weaving Workshops \$1,900** - Create a monthly functional harakeke weaving group in collaboration with Karen Clark (KareNZKite).

**South Taranaki Creative Space \$1,635** - To provide workshops and hanging system for display. Includes painting, clay, fabric painting, ceramic workshops and window art.

**Coastal Clay Club \$940** - To provide a community space in Ōpunakē for young people to engage with clay.

**Christine Keller: Weaving Comes to Town \$3,000** - A workshop by specialist visiting weaver for the local community.

**Taranaki National Art Awards \$1,030** - An art competition and exhibition, celebrating 20 years.

**Gabrielle Belz: Youth Print Workshops and Exhibition \$1,868**

A series of 12 print workshops exploring basic print techniques and how they might be applied.

**Suzanne Baker: Creative Inclusion \$3,129** - To provide opportunities for young people/adults with special needs/disabilities to attend creative workshops.

**Mareta Marsters Grubner: Puanga Koniahi "To gather around the fire" \$1,570** - Celebrating the Māori New Year through Puanga rising star event and creative arts activities for families.

The South Taranaki Creative Communities Scheme provides funding assistance for community-based arts activities in South Taranaki that meet one or more of the following funding criteria:

**Broad community involvement** - A project that will create opportunities for local communities to engage with and participate in arts activities.

**Diversity** - A project that will support the diverse arts and cultural traditions of local communities, enriching and promoting their uniqueness and cultural diversity.

**Young people** - A project that will enable and encourage young people (under 18 years) to engage with and actively participate in the arts.

**Round 1 of 2021-2022 opens on 27 July and closes on 27 August for projects that start after 11 October 2021.**

For detailed information and forms, please visit the link [here](#)

Any enquiries of to discuss an application, email [funding@stdc.govt.nz](mailto:funding@stdc.govt.nz) or phone 0800 111 323 or 06 278 0555

## Creative New Zealand – Funding Support

Creative New Zealand is the national arts development agency developing, investing in and advocating for the arts. Check out the [Funding calendar](#) for an overview of the support available. Information on all funding opportunities is announced through the CNZ newsletter, [sign up](#) to receive news and updates via email. [Arts Grants](#) offer short-term project funding for New Zealand artists, arts practitioners and arts organisations (including groups and collectives). This funding enables more sustainable careers, encourages innovation and the development of arts practice, and provides opportunities for diverse communities to access the arts. Amount: \$5,000 to \$75,000.



ARTS COUNCIL OF NEW ZEALAND TOI AOTEAROA

**CELEBRATING 25 YEARS**  
*Te whakanui i te rua tekau mā rima tau*

For updates and information on all Creative NZ funding, visit the [website](#) | Facebook: Creative New Zealand

## Arts on Tour NZ – Upcoming South Taranaki Performing Arts Shows

**Dr Ian Chapman & the Cosmic Jive Trio – David Bowie and the Art of Being Different**  
7.00 pm 16 June 2020, Everybody's Theatre, Ōpunakē

In this sparkling interactive musical performance and accompanying talk, Dr Ian Chapman and his band delight in entertaining and educating audiences on the empowerment and healing potential of music and the arts. Dr Chapman is a musician, academic and author, personally inspired by David Bowie, one of the most complex and enduring performers in the history of popular music.

Cosmic Jive Trio brings to the stage superb acoustic arrangements of David Bowie's finest songs, arranged especially for the show. The honest simplicity of the stripped back and largely acoustic instrumentation allows Bowie's masterful song-writing to take centre stage. A wonderfully entertaining celebration of eccentric creativity, this show is a testament to how the arts can empower, improve mental health, heal past traumas, and provide an essential blueprint for how to deal with bullying. Above all, this show is a triumphant affirmation of the power and potential of difference.



**Tickets are subsidised by South Taranki District Council - Adults \$10, Youth \$5 (Under 18)**  
**Tickets for sale from Aretha Lemon at Coastal Care Ōpunakē, from the Everybody's Theatre website or on the door**



## Ronald Hugh Morrieson Literary Awards 2021

Taranaki writers will benefit from the skills of leading contemporary writers for this year's annual Ronald Hugh Morrieson Literary Awards. Eileen Merriman will judge the short story category, Vaughan Ratapahana the poetry category and Matt Rillkoff, research articles.

### **Open Mic Poetry Night**

**7.00 pm Friday 11 June 2021, Hāwera LibraryPlus, High Street, Hāwera**

### **Free Writing Workshops with Judges**

**Saturday 12 June 2021, TSB Hub, Hāwera**

**Short Story: 9.30am – 12.30 pm . Poetry - 1.00pm – 4.00 pm**

**Competition closes: Wednesday 11 August 2021**

**Awards Ceremony: Thursday 21 October 2021**

To book a place in a free writing workshop, [register here](#).

**For more information, to register for workshops and to enter, visit the website: [www.southtaranaki.com/rhm](http://www.southtaranaki.com/rhm)**

## Taranaki National Art Awards 2021

**Sandfords Events Centre, Tasman Street, Ōpunakē**

**Entries Close: 17 September 2021**

**Awards Ceremony: 7.00 pm Friday 29 October 2021**

**Exhibition: 10.00 am - 4.00 pm, 30 October - 6 November 2021**

Entries are open for this annual national visual arts competition. Cash prizes are offered in seven categories: Painting, Taranaki Artists, 3D, Works on Paper, Fibre Art, Tō Taranakitanga and Photography. Entry is \$25 per artwork; artists can only enter each category once but can enter up to three categories. This year is the 20th anniversary of this event, which would not be possible without the generous support of sponsors and the Ōpunakē community. All entries are displayed in the exhibition and most works are for sale, offering a unique opportunity to purchase original artworks. The exhibition coincides with the regions garden festivals and the Taranaki Arts Trail. Artists can enter online. Check for updates and news on Facebook.



Winner of 2020 TSB Community Trust Painting Award,  
*Flyover* by Judy Woods

**Facebook: Taranaki National Art Awards**

**Please visit the website to find out more and enter: [www.taranakiartawards.co.nz](http://www.taranakiartawards.co.nz)**





## Coastal Arts Trail

**Registrations due: 4 June 2021**

**Coastal Arts Trail Launch Event: 5.30 pm 15 June 2021**

**Escape Coffee Roasters, 15 Liardet Street, New Plymouth**

A new *Coastal Arts Trail* will promote the art galleries, museums, and open studios throughout the west coast of the central lower North Island. The trail takes you through the culturally rich regions of Taranaki, Whanganui and Manawatū, celebrating their arts, heritage, and inspirational natural beauty.

The Coastal Arts Trail intends to promote the visual arts, artists' studios, and all significant galleries and museums on the lower west coast of the North Island. It provides a regional visitor package in a new and easy self-drive itinerary for visitors on SH1, SH3 and SH45 to develop and leverage the natural environment of the trail that inspires the arts and celebrates the heritage and history of the arts within this region. You can now register your gallery or studio on the website.

Please visit the website to [register](#) and for more information: [www.coastalartstrail.nz](http://www.coastalartstrail.nz)

---

## South Taranaki Creative Space

South Taranaki Creative Space is a not-for-profit community-focused creative hub, providing a welcoming space for people to meet, interact, learn new creative skills and network with other creative people.



### **Creative After School Kids Art Classes 2021**

Mixed media classes to help young creatives with their artistic development exploring different ideas and mediums.

Classes run from 3.30 pm - 5.00 pm. All classes are limited to 12 students per class.

**Mondays:** 12 - 13+ years.

**Tuesdays:** 10 - 11 years.

**Wednesdays:** 8 - 10 years.

**Thursdays:** 5 - 8 years.

### **Creative Adult Art Classes - Beginners: Thursdays 6.30 pm - 8.30 pm**

A beginners introduction to a variety of creative mediums. A great class if you are reawakening your creative journey. 1st term 2021 is an introduction to acrylic painting. 12 students per class.

### **Creative Adults Art Classes - Experienced: Tuesdays 6.30 pm - 8.30 pm**

An art class for experienced creatives who have the basics covered and would like to expand on what they have already learnt and explore different ideas and mediums. Includes professional practice, documenting your work, getting your art on the internet, presentation, entering art competitions and contemporary and traditional art history. 12 students per class.

### **Homemade & Homegrown – Indoor Mini Market**

**9.30 am - 1.00 pm Saturdays**

For all enquiries or to register for a class, contact Erryn Willcox or Carl Fairweather at the contacts below.

**41 Princes Street, Hāwera | Phone or text: 027 361 6930**

**Facebook: [South Taranaki Creative Space](#) | Email: [southtaranakicreativespace@gmail.com](mailto:southtaranakicreativespace@gmail.com)**

---

## Hāwera Art Club

**1.00 pm, first Friday of each month**

**Salvation Army Hall, 19 - 23 Regent street, Hāwera**

A group of creatives who meet each month to share ideas, discuss our various and varied art practices, plan events and generally socialize. The club has an extensive library of books and DVD's for members use. New members are welcome.



**For more information, contact Cherol Filbee: Phone 027 244 4953**



## Parihaka Puanga Kai Rau Festival

**6.00 am - 9.00 pm Saturday 12 June 2021, Parihaka Papakāinga**

Annual festival acknowledging the Māori New Year in South Taranaki. Activities include karakia, waiata, poi, mahi (work) in the maara (garden) and fun for kids. Enjoy a bonfire and evening concert at 6.30pm.

**For more information visit: [Parihaka Puanga Kai Rau Festival - Facebook](#)**

## Lysaght Watt Gallery – Winter Exhibitions

### Lysaght Watt Trust Art Award 2021 – Exhibition

Until 19 June 2021

The 2021 Awards attracted a record number of entries from throughout New Zealand. Judged by Paul Brobbel, curator from Govett Brewster Art Gallery in New Plymouth.

**TAML Forestry 2D Category Winner:** Sheyne Tuffery, Auckland

**Meremere/Ohangai Rural Women 2D Category Commended:** Sarah Warren (Luttrell), Masterton

**Neil and Helen Walker Family Trust 3D Category Winner:** Jeanette Verster, New Plymouth

**Beccard Motors 3D Category Commended:** Jonathan Truslove, Nelson

**Tandem Group Local Category Winner:** Mark Bellringer, Eltham

**Lysaght Watt Trust Supreme Winner:** Jeanette Verster, New Plymouth

### Kā Ora Taku Toa - A Proud Celebration of Ngāruahinetanga

28 June - 24 July 2021

'Inspired and motivated by the actions our Ngāruahine rangatira Titokowaru, this first exhibition for our iwi brings together work created by ringatoi who whakapapa to Ngāruahine, as visual manifestations of our identity and pride in our Ngāruahinetanga. *Kā Ora Taku Toa* is taken from the ngeri 'Titokowaru,' composed by Dr Huirangi Waikerepuru. It refers to our iwi moving from a time of chaos and pain during the confiscation of our whenua, the political imprisonment of our koroua without trial in southern jails and implementation of a Scorched Earth policy throughout our rohe, to surviving that pain and trauma and moving towards revitalisation, rejuvenation and re-asserting our cultural identity on our own whenua. Nō reira, nau mai, haere mai.' *Bonita Bigham, Curator.*



#### Jo Stallard & Gabrielle Fawcner

26 July - 14 August 2021

A mixture of life and plein air drawings in chalk pastels. This figurative and landscape work transforms models and landscapes into bold colourful expressionism. The artist's lens is used to create an alternative view of what we think we might see.

#### Brushed Off: Hāwera Art Club

16 August - 11 September

This exhibition celebrates the talents of local artists.

Lysaght Watt Gallery 4 - 6 Union Street, Hāwera | Phone 06 278 7611

Website: [www.lysaghtwattgallery.co.nz](http://www.lysaghtwattgallery.co.nz) | Facebook: Lysaght Watt Gallery

Open Monday - Friday 10.00 am - 4.00 pm Saturday 10.00 am - 1.00 pm

## Hip Hop Dance Classes - Hāwera

Term Two: Thursday Classes - \$10 per class

Junior Classes (Ages 5 - 12 years) 3.45 pm - 5.00 pm

Teen Class (Ages 13 - 17 years) 4.45 pm - 6.00pm

Senior Citizens Association Hall, 81 Victoria Street, Hāwera

Fusion & Flow are inspired by the art elements of Hip Hop Dance & Culture and are creating opportunities for young people to engage, express & evolve through dance. Fusion & Flow are family & community focused, offering a safe environment for youth, freedom to express in active learning, movement & growth in the arts. Help spread the word to young people that love to dance or just want to try something new and fresh in South Taranaki.



For more information or to register, visit the [Website](#) and follow on Facebook: Fusion & Flow – Taranaki



## Taranaki Arts Trail 2021

Taranaki Arts Trail Event: 29/30/31 October & 5/6/7 November 2021

Preview Exhibition: 29 May - 20 June 2021, Percy Thomson Gallery, Stratford

The Taranaki Arts Trail is building up to be a fantastic event for Taranaki artists. Over 80 artists are taking part, opening their studios for the first two weekend trail in collaboration with the Taranaki Garden Festival. A Preview Exhibition at Percy Thomson Gallery in Stratford will showcase every artist involved. Check out the amazing talent Taranaki has and plan your Trail for Spring.

For more information, visit: [www.taranakiartstrail.co.nz](http://www.taranakiartstrail.co.nz)

## West African Drum & Dance Weekend

11 & 12 September 2021

Eltham Presbyterian Campground, Eltham

Join amazing performer Koffie Fugah for a fun weekend learning West African Drumming and Dance. Experience something new with a welcoming group of people. Koffie Fugah is a master drummer, dancer and story-teller from Ghana. He has been performing and teaching traditional African songs, dance and drumming for over 20 years. In 2013 he migrated to New Zealand and founded the Kadodo West African Drum and Dance School. For the past 5 years, as Kadodo's Artistic Director, he has been facilitating drum and dance workshops for schools, community and corporate clients all over New Zealand. His life-long passion is sharing the love of his culture with people and encouraging them to use music to express themselves joyfully.

Camping available, \$100 per person for two nights including classes. Day attendance \$30 per person, drum hire available for \$5. Supported by Creative Communities South Taranaki. Open to all ages and experience.



For more details register your interest contact Nikki Watson: Email: [art4thahart@hotmail.com](mailto:art4thahart@hotmail.com) or phone 0212 424 600

## The Village Gallery – Winter Exhibitions



### **Proud Aotearoa**

**8 June - 2 July 2021**

An art exhibition curated by Dimmie Danielwski, to celebrate LGBTQIA+ month. Showcasing a range of diverse artwork by LGBTQIA+ (lesbian, gay, bisexual, transgender, queer (or questioning), intersex, and asexual – or allies) artists, including Rainbow Youth.

### **Frame & Fortune - Hāwera Art Club**

**6 - 30 July 2021**

### **Creations in Fibre**

**2 - 27 August 2021**

Work by members of Central & South Taranaki Creative Fibre Groups displaying a variety of wearables and items to grace the home, including knitting, crochet, weaving and felting. Gallery is open Monday - Saturday for this exhibition.

**WORKSHOP: Art in Paper with Jeanette Verster: 7 August 2021**

**WORKSHOP: Textures in Tapestry Weaving with Maree Liddington: 14 & 15 August 2021**

**WORKSHOP: Art in Felt with Beth Pottinger: 21 August 2021**

Cost \$40 per workshop (includes materials). To register, contact Maree Liddington: Phone 027 777 3473

**The Gallery Shop:** Members can display items for sale for four to six weeks periods throughout the year. 25% commission on sales. Cards, prints, paintings, pottery, photographs, jewellery and handmade accessories for sale.

**Friends of the Village Gallery Membership:** Subscriptions only \$15 per year (due 1 April). Members can submit original artworks into Members' Exhibitions three times a year and in the Gallery Shop.

**The Village Gallery, 166 High Street, Eltham | Contact: Lorna Davies 06 765 8121 or 027 328 3877 to book an exhibition**

**Open: Tuesday - Saturday 10.00 am - 3.00 pm (closed Saturdays between exhibitions)**

**Facebook: Village Gallery Eltham NZ | Email: [villagegalleryeltham@gmail.com](mailto:villagegalleryeltham@gmail.com)**



## Resene Nature Murals Competition

The Resene Nature Murals competition is open to New Zealand artists to design a mural which incorporates an environmental message for a wall in their local community. Murals are a great way to beautify spaces, deter anti-social behaviour and build community pride, as well as being an effective visual medium for building awareness around a sustainability or environmental message. The ten winning entries will receive a \$750 Resene paint voucher, drop cloth/s and high vis vest/s

as well as a \$1000 grant on completion of the mural. Entries are open until midnight Friday 11 June 2021 and the ten winners will be announced on Thursday 24 June 2021. Visit the website for [Entry form](#).

**Keep New Zealand Beautiful | Website: [www.knzb.org.nz](http://www.knzb.org.nz)**





## Gallery Pātea

### *The Locals*

9 June – 3 July 2021

**Opening Event: 1.00 pm Saturday 12 June 2021**

A showcase of local Pātea artists in a variety of artforms - awa stone carvings, painting, printmaking, photography, pottery using local clay and music. The exhibition is supported by a range of workshops by experienced artists from the community. Supported by South Taranaki Creative Communities.

### **WORKSHOP: Graffiti for Youth with Luther Ashford**

3:15pm Tuesday 15 June, Tuapapa Studio. Followed by Exhibition: 17 June - 15 July 2021

### **WORKSHOP: Performance & Story Telling with Kimba Mallowes**

1.00 pm – 3.00 pm Saturday 19 June, Gallery Pātea

### **WORKSHOP: Framing Fundamentals with Jonny de Painter**

1.00 pm – 3.00 pm Friday 18 June & Sunday 20 June, Gallery Pātea

### **WORKSHOP: Apps for Artists with Steven Boothe**

1.00 pm – 3.00 pm Saturday 26 June, Gallery Pātea

Gallery Pātea is a non-profit organisation, relying on support from volunteers. If you're keen to help out, please get in touch. Gallery Pātea promotes creativity in the South Taranaki area and urges any local artists to bring in their work.

**Gallery Pātea, 56a Egmont Street, Pātea**

**Open: 10.00 am - 3.00 pm Wednesday - Saturday or by appointment**

**For more information text Gabrielle Belz 021 0813 8355 | Facebook: Gallery Pātea | Email [gallerypatea@gmail.com](mailto:gallerypatea@gmail.com)**

## Aotea Utanganui – Museum of South Taranaki



### **Pātea R.S.A Centenary: Until September 2021**

An exhibition commemorating the Pātea Returned Services Association's 100<sup>th</sup> year. Featuring many items that were used in the wars, from a shovel brought back from the trenches of World War I to the Pātea RSA's honour board.

### **100 & Over: June – November 2021**

Community groups have long been an integral part of life for smaller and rural townships. To celebrate these men and women, the Museum has collaborated with three community groups - The Country and Women's Institute of South Taranaki,

Pātea Kilwinning Lodge No.18 and Pātea RSA. From banners, gavels and secret handshakes to fundraisers and floral arrangements - come check out this display to immerse yourself in one of the first women's institutes in New Zealand and the oldest men's club in the district.

**Opening Event: 11.00 am – 12.30 pm 2 June 2021**

All welcome to celebrate these two community focused exhibitions. RSVP welcome but not required.

### **Cinema: Waitangi: What Really Happened (2011)**

This docudrama follows an imaginary news reporter who travels back in time to cover the days leading up to the signing of the Treaty of Waitangi on 6 February 1840. Dropping the usual solemnity surrounding the founding document of Aotearoa, it uses humour and asides to the camera to evoke the chaos and motives behind the Treaty. Written by Gavin Strawhan, with input from novelist Witi Ihimaera.



### **Cinema: Pouaka Korero: Talking Box (2021)**

Aotea Utanganui presents another TRC-funded project to the South Taranaki community, presenting a series of mini-documentaries about our wonderful and diverse part of the country we call home. Historical and contemporary, these documentaries encompass people who have contributed to the region; who have enhanced our district with their passion and are ordinary people doing extraordinary things. From August to September, the Museum will be screening 10 documentaries the staff have created with the help of Keith Finnerty (Cat and Mouse Television) and the many interviewees who made this project possible.

**Aotea Utanganui - Museum of South Taranaki, 127 Egmont Street, Pātea | Phone: 06 273 8354**

**Facebook: Aotea Utanganui | [www.museumofsouthtaranaki.wordpress.com](http://www.museumofsouthtaranaki.wordpress.com)**

**Email: [museum@stdc.govt.nz](mailto:museum@stdc.govt.nz) | Open: 10.00am - 4.00pm Monday – Saturday**

## Right Royal Cabaret Fest – South Taranaki



### ***It's My Party – The BeatGirls***

**7.00 pm Friday 30 July 2021**

**Kakaramea Hall, SH3, Kakaramea (just north of Pātea)**

The BeatGirls bring their 25th birthday party to Taranaki, and it's your party too! Showcasing the best from their repertoire, NZ's favourite girl group will sing and dance up a storm and take you on a journey through the years with plenty of humour and sassy choreography to compliment hit songs from the 60s, 70s, 80s, right through to today. Stories and wry observations and woven together with songs, telling a

tale of this iconic Kiwi trio, once described as 'adrenaline on high heels', who have reached a quarter of a century and remain at the top of their game. 90 minutes with interval. Admission \$45.00 GA, tickets from Ticketek.

For more information, full Festival schedule and ticket bookings visit: [www.rightroyal.co.nz](http://www.rightroyal.co.nz)

## Puanga Koniahī – Pātea

Celebrate the South Taranaki Maori New Year with these unique opportunities, Puanga Koniahī – 'Gather around the Fire'. Supported by South Taranaki Creative Communities.

**6.30 am - 8.30 am Saturday 5 June 2021**

**Stafford Street, Pātea (old swimming pool site)**

Learn about the stars of Aotearoa at an early morning stargazing session with expert Kere Taputoro.

**9.00 am - 3.00 pm Saturday 5 June 2021**

**Old Folks Hall, Egmont Street, Pātea**

Get creative and paint or colour a star board. Great activity for parents and kids. Limited stars available, please register. Text 'Book a star' and your name.



For information and registration, contact Co-ordinator Mareta Marsters-Grubner: Phone 027 841 1135



## Pātea Open Mic Sessions

**12 noon - 3.45pm, Saturday 26 June & Saturday 28 August 2021**

**Aotea Utanganui – Museum of South Taranaki**

Join local musician Kimba Mallowes for this bi-monthly event. Try out your skills with other talented local musicians, singers and performers. This day is open to all skill levels and offers a chance to jam with others. Fun for the whole whānau. Play, sing, say some poetry or just enjoy the performances.

Facebook: Patea Open Mic | For more information, contact Kimba Mallowes on 027 640 8137

## Pātea Community Creative Group

**10.30 am - 3.00 pm Tuesdays**

**Old Folks Hall, 139 Egmont Street, Pātea**

An opportunity to have a go at drawing, painting, sculpture or carving – all levels welcome to join this creative group. Find out which media you like working with most after three sessions to experiment and explore using a range of materials. Connected to the Taranaki Retreat, the sessions offer a space to connect with others, explore your talents and have fun. Guest artists will be brought in to support the group. Gold coin koha appreciated to cover materials and a cuppa. All welcome.



For information, contact Co-ordinator Mareta Marsters-Grubner: Phone 027 841 1135

Email: [maretamarsters@gmail.com](mailto:maretamarsters@gmail.com)



## Weaving Workshop – Kākano Ōpunakē

### Whariki Mat Weaving

10.00 am – 4.00 pm Saturday 19 June 2021

An opportunity to learn traditional harakake (flax) Whariki Mat Weaving with experienced weaver and tutor Karen Clark from Waitara. Supported by South Taranaki Creative Communities. \$20 per person or free for students and Community Services Card holders. Booking essential.



**Kākano Studio Gallery, 21 Napier Street, Ōpunakē | Phone: 022 626 9495**  
**Facebook: Kākano Ōpunakē | Instagram: Kakano\_Opunake**



## from out of the blue studio gallery - News

### **Altered Perception: Julie Lumsden & Kath O'Halloran** **Until 21 June 2021**

Featuring felted Works by two fibre artists from the Hawkes Bay Region. Julie using different felting techniques to large wall hangings, throws and other domestic items, while exploring the idea of how our emotions affect the way we see things. Kath has created three nuno felted and hand stitched garments for the exhibition.

### **Warmth: Juried Open Call Exhibition** **24 June - 2 August 2021**

A collection of fibre works from around New Zealand that explore some aspect of the word 'Warmth'. The works are varied and exciting with many artists really pushing the boundaries of their practice to create using only natural materials.

### **Diaries: Invitational Exhibition** **5 August - 13 September 2021**

Acknowledging and celebrating artists who create on a long term routine daily basis in the form of diaries. These are not your usual diaries but rather sequential makings over at least 100 days and in several cases for 365 days. The artists have used a wide variety of materials and techniques to create these records.

**WORKSHOP: Felted Rocks with Julie Lumsden** 10.00 am – 2.30pm, Saturday 19 June 2021

**WORKSHOP: Random Weave Cane & Driftwood Baskets with Nicola Basham** 9.00 am – 4.30pm, 29 & 30 June 2021

**WORKSHOP: Learn How to Needle Felt with Alice Cowdrey** 10.30 am – 2.00pm, Saturday 3 July 2021

**WORKSHOP: Upcycling – Create a Bespoke Clutch Bag with Anne Garvey** 10.00 am – 3.30pm, Saturday 7 August 2021

**WORKSHOP: Fabric Collage with Anne Garvey** 10.00 am – 3.30pm, Saturday 28 August 2021

For full details and workshop registrations, visit the gallery website. Contact via email to join the digital mailing list.

**Contact: Viv Davy. Phone: 021 407 424 | 18 Halse Place, Ōpunakē**

**Website: [www.fromoutofthebluestudiogallery.com](http://www.fromoutofthebluestudiogallery.com) | Open: 1.00 pm - 5.00 pm Thursday - Monday or by appointment**

**Facebook: from out of the blue studio gallery | Instagram: threadthinker | Email: [viv@blacknosugar.com](mailto:viv@blacknosugar.com)**



## Everybody's Theatre

Celebrating its Centennial in 2021, Everybody's Theatre in Ōpunakē is an elegant historic theatre in Taranaki, restored to its former glory. In addition to the latest new releases, the theatre also hosts boutique nights, playing a selection of classic, foreign and fringe films. Bookings can now be made online. Check the website for screenings, events and tickets. Enquiries for hire for special events welcome.

**Boutique Night: 7.00 pm Sunday 6 June 2021: Minamata**

**Boutique Night: 7.00 pm Sunday 4 July 2021: Dream Horse**

**Special Event: 7.00 pm Wednesday 16 June 2021: Dr Ian Chapman - David Bowie & the Art of Being Different**

**Everybody's Theatre, 72 Tasman Street, Ōpunakē | Phone: 027 383 7926**

**Website: [www.everybodystheatre.co.nz](http://www.everybodystheatre.co.nz) | Email [everybodystheatre@gmail.com](mailto:everybodystheatre@gmail.com)**

## Celebration Concert: Hāwera Memorial Theatre Trust

Hāwera Memorial Theatre, Albion Street, Hāwera  
7.30pm Saturday 24 July 2021 & 2.00 pm Sunday 25 July 2021

The Hāwera Memorial Theatre Trust is celebrating 10 years of supporting the community through its kaitiakitanga (guardianship) of the Theatre. The all-ages concert will feature bands, dances, choirs, and soloists. The Hāwera Memorial Theatre has seen significant improvement over the past ten years – many of these have been made possible by the fundraising efforts of the Trust alongside the commitment of the STDC to keep this wonderful venue not only viable, but a top-class venue that attracts acts from the region, the country and internationally. This concert aims to raise more money for further improvements to the theatre. Come along – be part of the journey. Enjoy a wonderful concert at the same time as you are helping the Trust help the community. Tickets: \$25 Adults, \$15 (Youth – up to 18 years).



Tickets available from South Taranaki i-SITE, Hāwera or visit [www.iticket.co.nz](http://www.iticket.co.nz)



### Quirky Fox – Art + Framing

**Allure: Heather Denison**

Zimbabwe-born graphic-designer-turned-fine-artist Heather Denison creates works that hover between the real and the surreal. Based in the Hawkes Bay, Heather works with oil to create realistic works inspired by nature with a hint of juxtaposition.

**Winter Study – From 2 July, runs for 5 weeks**

The fragile and short life span of winter blossoms are captured in equally fine and delicate porcelain.

**Quirky Fox, 205a High Street, Hāwera | Phone: 06 278 6909**  
**Open: Monday - Friday 10.00 am - 4.30 pm Saturday 10.00 am - 12 noon**  
**Facebook: Quirky Fox: Art & Framing | Website: [www.quirkyfox.co.nz](http://www.quirkyfox.co.nz)**

## Puke Ariki - Autumn Exhibitions

Puke Ariki's galleries give fascinating insights into Taranaki's history, culture and environment.

**Ngā Hau Ngākau – An Exhibition by Robin Slow, Brian Flintoff and Bob Bickerton**  
**Until 25 July 2021 - Temporary Gallery, Puke Ariki Museum**

**1896: Christopher Aubrey's Taranaki**  
**16 April – 15 August 2021 - Lane Gallery, Level 2, Puke Ariki Library**



**Long Weekend of Literature: 29 July – 1 August 2021**

Over four days, literature comes to life with some of Aotearoa's biggest names in the literary arts. Join Witi Ihimaera for an evening of spoken word, be entertained by author and comedian Tom Sainsbury and share words, wit and wisdom over high tea with Dame Fiona Kidman. View the full line-up and book tickets at [www.PukeAriki.com/FOW](http://www.PukeAriki.com/FOW)

There's a mix of paid-ticketed, free-ticketed and open (no bookings required) events.

**Take a Walk on the Wild Side**

Be wowed by the world-renowned Wildlife Photographer of the Year exhibition, on show 14 August - 14 November. Produced and toured by the Natural History Museum, London, the exhibition features 99 images which capture fascinating animal behaviour, spectacular

species and the breath-taking diversity of our planet. Jelly nanny (pictured), what do you see first – a fish or a jellyfish? In this image, a young trevally stares out from under a jellyfish's umbrella, seeking refuge from predators deterred by the jelly's sting. Visit the exhibition to discover more surprising stories from the natural world.

**Puke Ariki, 1 Ariki Street, New Plymouth | Phone: 06 759 6060 | Open: 10.00 am - 5.00pm 7 days | Free Entry**  
**Website: [www.pukeariki.com](http://www.pukeariki.com) | Facebook: Puke Ariki: Museum-Library-Visitor Information**

## Percy Thomson Gallery – Winter Exhibitions

### **Taranaki Arts Trail – Preview Exhibition**

Until 20 June 2021

### **Puanga 2021**

26 June – 11 July 2021

A community celebration for Puanga – the Māori New Year. The main gallery will transform into a magical starlight wonderland, with local schools decorating the walls with paintings of stars and the night sky.

### **Matariki - Deep Space: A View of the Stars and Beyond**

26 June – 8 August 2021

Psychedelic photos of the Matariki stars, galaxies, and the colourful remains of exploded stars are captured by Stephen Chadwick, astronomer and Massey University professor, in a way that impossible 20 years ago.

### **Looking Forward: Print Council Aotearoa NZ**

16 July – 8 August 2021

Celebrating the continued revival of printmaking in New Zealand.

### **Marti Friedlander: Portraits of the Artists**

13 August – September 5 2021

Marti Friedlander (1928-2016) is one of our most prominent and highly regarded photographers. Her work has been central to New Zealand's social and cultural life. This exhibition is full of novel and compelling images of both well-known and now 'forgotten' or little-known artists, writers, craftspeople, actors, who were prominent players in expanding and vitalising cultural fields in New Zealand in the 1960s, 1970s and later. Curated by Dr Leonard Bell. Toured by the New Zealand Portrait Gallery.



### **Dale Copeland Collection**

16 July – 8 August 2021

Assemblage and collage artist Dale Copeland shares some of her favourites from her collection of 'goodies'.

**Percy's Place**, the gallery shop, is open Monday – Friday 10.30 am, Saturday 10.30 am – 1.00 pm, Closed Sundays.

**Percy Thomson Gallery, Miranda Street, Stratford | Director: Rhonda Bunyan | Phone 06 765 0917**

**Open: Monday - Friday 10.30 am - 4.00 pm Saturday - Sunday 10.30 am - 3.00 pm**

**Website: [www.percythomsongallery.org.nz](http://www.percythomsongallery.org.nz) | Facebook: Percy Thomson Gallery**

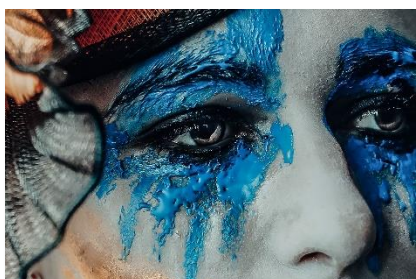
---

## Fenton Street Art Collective – Winter Exhibitions

### **Sons of the Fathers We Knew - Stuart Greenhill & Simeon Patience**

18th June - 22 July 2021

A collaborative work of poetry, audio, photography and art. The men were chosen by their connection to Central and Eastern Taranaki. Their families were pioneering women and men who came to New Zealand, broke in the land, and settled in what was a harsh, challenging environment. The artists have set out to acknowledge this heritage.



### **Painted Ladies: The Feminine Art of Disguise - Margie Coplestone**

23 July - 19 August 2021

An exhibition exploring 'how women can break free from their daily labels of mum, wife/partner, daughter, employer/employee where they are giving of themselves in a way that does not necessarily define them as a woman...dressing up, painting faces and bodies and spending some time in a world of fantasy where they are most definitely defined as women.' *M. Coplestone*

### **Printmakers: Keeley Eastwood and Elizabeth Harrison**

20 August - 16 September 2021

A showcase of the artists personal experiences of life through printmaking.

**11 Fenton Street, Stratford | Facebook: Fenton Street Art Collective | Email: [fentonartscollective@gmail.com](mailto:fentonartscollective@gmail.com)**

**Open: Sun – Weds 10.00 am – 2.00 pm Thurs – Sat 10.00 am – 4.00 pm | Phone: 021 0299 2839**

**[www.fentonartscollective.co.nz](http://www.fentonartscollective.co.nz)**



## Gover Street Gallery

Gover St Gallery is steadily becoming the place to display, sell and buy your art in New Plymouth. With over 320 artists involved in the Gallery it continues to showcase a wide, varied and eclectic mix of artwork that locals and visitors enjoy marvelling at. The high level of talent we have in our region is outstanding. Gover St Gallery 'Themed Exhibitions' are open to everyone to take part. Contact for more information if you would like to be involved.



**June: Fluidity: An Exhibition of artwork by Henriette Reason**

**June: Miniatures Exhibition:** Themed Exhibition of petite artworks no bigger than 10cm x 10cm

Note: Queens Birthday Weekend 5 – 7 June, open hours as usual

**July: Rotunda Exhibition:** Themed Exhibition of round artworks.

**August: Portrait Exhibition**

**19 Gover Street, New Plymouth | To exhibit, register, enquire, contact Heidi on 06 757 4278**

**Open: Monday – Saturday 10.00am – 4.00pm Sunday 12 noon – 4.00pm. Closed Tuesdays.**

**Facebook/Instagram: Gover Street Gallery | Email: [goverstgallery@gmail.com](mailto:goverstgallery@gmail.com)**



## Waverley Glass Art Studio and Gallery

Artists Lisa and Jimi Walsh show highly collectable glass and ceramic artworks and functional pieces, created onsite in the adjoining workshops.

**49 Wereroa Road, Waverley**

**Open: 8.30 am - 4.00 pm daily, closed Wednesdays**

**Phone: 027 684 3641 | FB: Waverley Glass Art Studio**

## The Big Idea

The Big Idea is an online hub for artists of all genres. The Big Idea provides you with daily news updates, the latest jobs and opportunities, events as well as ideas and inspiration from across the creative industries to help you create your own success. The Big Idea is the largest, leading online resource for the arts in New Zealand.

Website: [www.thebigidea.nz](http://www.thebigidea.nz)



## [Ōpunakē Open Studios & Galleries](#) – *click to follow link*

**Would you or your group like to have information included in the next edition of  
Te Tohu a Toi – STATE OF THE ARTS?**

**Please send concise text and photographs for the Spring Edition (Sept, Oct, Nov 2021) to:  
Michaela Stoneman, Arts Co-ordinator: [michaela.stoneman@stdc.govt.nz](mailto:michaela.stoneman@stdc.govt.nz)**

**Send information by:**

**Monday 23 August 2021**

**Publish date:**

**Wednesday 1 September 2021**

To unsubscribe to *State of the Arts*, please [email Unsubscribe](#) in the subject line.