

Te Tohu a Toi

STATE OF THE ARTS

South Taranaki Arts Bulletin #45

Spring 2021

| [Art News](#) | [Opportunities](#) | [Exhibitions](#) | [Art Events](#) |

Kia ora koutou,
Welcome to our Spring edition of *State of the Arts*.

This edition was delayed due to the recent Lockdown, creating many challenges for us all to navigate. We all know from last year how this situation has a huge effect on the arts and the ability to deliver programmes, exhibitions, events and performances. I've been really impressed with how people have adapted and stayed positive over this time, checking in on and connecting with each other while putting the important things first – health, well-being and family.



With some good planning and decision making, our local galleries and studios have established robust systems to ensure visitors can still have safe access to exhibitions. It's a good idea to check in on any events or workshops to see if they are going ahead close to the time, and be prepared to sign in/scan, mask up and follow social distancing protocols. Let's continue to keep supporting each other and stay positive.

I have been really enjoying working on many youth projects around the district lately, including the Manaia Community Pool Mural Project with students at Manaia School, creating hexagonal artworks with students from Eltham Primary School for the Hive Mind exhibition opening later this month at The Village Gallery in Eltham and running a hands-on session at Waverley Libraryplus for a local youth art group. I also visited classes at the South Taranaki Creative Space in Hāwera to show them some of my work, as they are focusing on printmaking this term. Thanks to all who have hosted me and welcomed me into your schools and spaces, it's a real pleasure working with our young people.

Pictured: Work in progress for the Hive Mind exhibition at Eltham Primary School

The Taranaki National Art Awards has extended their entries to 24 September. Many other national art competitions have rescheduled to allow artists to participate and events to occur. Thanks for your resilience!

Please continue to support and enjoy our local artists, galleries, groups, projects and events. Get in touch with me via email if you need advice or support with applications or help to realise a creative project. Take care and keep creating!

Ngā mihi,

Michaela

Michaela Stoneman | Arts Co-ordinator | South Taranaki District Council | 0800 111 323
michaela.stoneman@stdc.govt.nz | www.southtaranaki.com

South Taranaki Creative Communities Funding

The decision was made to extend the last round due to the Covid Lockdown by two weeks. Thirteen applications were received and the Allocation Committee will meet on Thursday 23 September 2021. The successful funding results will be posted on the STDC website.

The South Taranaki Creative Communities Scheme provides funding assistance for community-based arts activities in South Taranaki that meet one or more of the following funding criteria:

Broad community involvement - A project that will create opportunities for local communities to engage with and participate in arts activities.

Diversity - A project that will support the diverse arts and cultural traditions of local communities, enriching and promoting their uniqueness and cultural diversity.

Young people - A project that will enable and encourage young people (under 18 years) to engage with and actively participate in the arts.

Round 2 of 2021-2022 will open in Autumn 2022 – dates will be confirmed in the Summer edition of State of the Arts.

For detailed information and forms, please visit the link [here](#)

Any enquiries of to discuss an application, email funding@stdc.govt.nz or phone 0800 111 323 or 06 278 0555



RONALD HUGH
MORRIESON
Literary Awards 2021

Ronald Hugh Morrieson Literary Awards 2021

Ronald Hugh Morrieson Literary Awards 2021 Presentation Night
TSB Hub, Hāwera

The annual Ronald Hugh Morrieson Literary Awards offer a \$1,000 prize in each of the following categories; Short Story, Poetry and Research. Free online writing workshops were held for local secondary school students and the public in June 2021. The awards are sponsored by the Lysaght Watt Trust. Due to the current state of uncertainty around Covid-19, the 2021 Awards Ceremony will only be open to finalists. All finalists will be notified via email at the beginning of October with an invitation to attend the presentation night. Judges Eileen Merriman, Vaughan Rapatahana and Matt Rillkoff will join finalists at this year's presentation held at the TSB Hub. Finalist stories from each year are collated into a book and can be borrowed or purchased from any South Taranaki LibraryPlus.

For more information visit the [South Taranaki District Council Website](#) or contact Katherine Bosworth on 0800 111 323

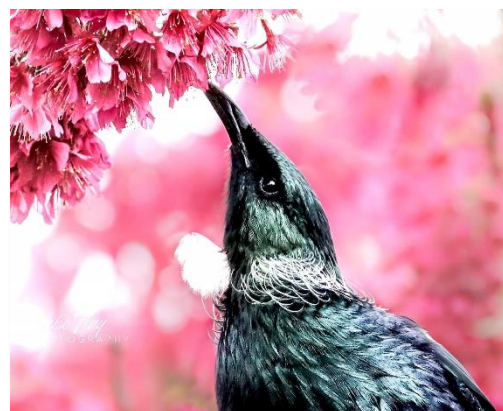
Arts Lease Programme – South Taranaki Artists

The South Taranaki District Council calls for visual art submissions from South Taranaki artists for lease and display in the Council's Administration Building in Hāwera. The Art Lease Programme was established in 1996 to support and nurture our creative community. The foyer gallery enables us to showcase a selection of work from our talented artists and offer their work for sale with no commission taken. To qualify for the Art Lease Programme, artists must reside within the South Taranaki District boundaries. Selected artists are paid a fee of \$150 for a year lease, which is paid in November. Please note: Only wall hanging artworks are eligible.

To submit artworks (up to 4 per artist), please include this information:

- Your name, address, daytime phone number and email address.
- A clear photograph or scan of the artwork(s). *Digital files at least 1 MB file size, please.*
- Title, dimensions, medium and date of each artwork.

Email to the address below or post to: Michaela Stoneman, Arts Co-ordinator, South Taranaki District Council, Private Bag 902, Hāwera 4640 (or drop into the Albion Street office and attention to M. Stoneman).



2020/21 Arts Lease artwork by Denise Flay

Closing date for submissions: 5.00 pm Monday 4 October 2021

For more information, please phone Michaela on 0800 111 323 or email: michaela.stoneman@stdc.govt.nz

Taranaki National Art Awards 2021

Sandfords Events Centre, Tasman Street, Ōpunakē

Entries Close: **EXTENDED TO 24 SEPTEMBER 2021**

Awards Ceremony: **7.00 pm Friday 29 October 2021**

Exhibition: **10.00 am - 4.00 pm, 30 October - 6 November 2021**

Entries have been extended for this annual national visual arts competition due to the Covid-19 Lockdown. Cash prizes are offered in seven categories: Painting, Taranaki Artists, 3D, Works on Paper, Fibre Art, Tō Taranakitanga and Photography. Entry is \$25 per artwork; artists can only enter each category once but can enter up to three categories. This year is the 20th anniversary of this event, which would not be possible without the generous support of sponsors and the Ōpunakē community. All entries are displayed in the exhibition and most works are for sale, offering a unique opportunity to purchase original artworks. The exhibition coincides with the regions garden festivals and the Taranaki Arts Trail. Artists can enter online. Check for updates and news on Facebook.



Winner of 2020 TSB Community Trust Painting Award,
Flyover by Judy Woods

Facebook: **Taranaki National Art Awards**

Please visit the website to find out more and enter: www.taranakiartawards.co.nz



Arts in the Park

Saturday 4 December 2021

King Edward Park, High Street, Hāwera

Registrations will be open soon for artists and groups to take part in Taranaki's premier outdoor arts and crafts festival. Enjoy the large, pleasant, open environment of King Edward Park to exhibit, demonstrate and sell your arts or crafts - stalls are FREE! A walk through the park is a voyage of discovery, including local musicians, food stalls, hands-on art activities for kids in the *Art Tipi* and much more. *Arts in the Park* offers an entertaining day for the whole whānau, offering an opportunity to support local artists and craftspeople by purchasing handmade goods to kick start your Christmas shopping.

Registration forms available soon from TSB Hub, South Taranaki i-SITE, South Taranaki LibraryPlus centres
Check STDC Facebook page for updates

Coastal Arts Trail

The new *Coastal Arts Trail* promotes art galleries, museums and open studios throughout the west coast of the central lower North Island.

You can register your gallery for the soon-to-be-launched Coastal Arts Trail to be a part of the marketing campaign planned to get people across the country excited about Aotearoa's newest arts experience. Venture Taranaki, along with the Whanganui and Manawatu regions, has partnered with marketing agency HeyYou to come up with an exciting and out-of-the-box concept that is sure to get people talking about the Coastal Arts Trail. To make sure your gallery is a part of the action and included in future promotional opportunities please register. For more information contact the Taranaki Coastal Arts Trail Project Manager, Alyson Tapply Email: alyson@venture.org.nz



Visit the website to [register](http://www.coastalartstrail.nz) and for more information: www.coastalartstrail.nz



Hāwera Art Club

Meet: 1.00 pm, first Friday of each month

Salvation Army Hall, 19 - 23 Regent street, Hāwera

A group of creatives who meet each month to share ideas, discuss our various and varied art practices, plan events and generally socialize. The club has an extensive library of books and DVD's for members use. New members are welcome.

For more information, contact Cheroil Filbee: Phone 027 244 4953

South Taranaki Creative Space

South Taranaki Creative Space is a not-for-profit community-focused creative hub, providing a welcoming space for people to meet, interact, learn new creative skills and network with other creative people.



Creative After School Kids Art Classes 2021

Mixed media classes to help young creatives with their artistic development exploring different ideas and mediums.

Classes run from 3.30 pm - 5.00 pm. All classes are limited to 12 students per class.

Mon: 12 - 13+ years. **Tues:** 10 - 11 years. **Weds:** 8 - 10 years. **Thurs:** 5 - 8 years.

Creative Adult Art Classes - Beginners: Thursdays 6.30 pm - 8.30 pm

A beginners introduction to a variety of creative mediums. A great class if you are reawakening your creative journey. 12 students per class.

Creative Adults Art Classes - Experienced: Tuesdays 6.30 pm - 8.30 pm

An art class for experienced creatives who have the basics covered and would like to expand on what they have already learnt and explore different ideas and mediums. Includes professional practice, documenting your work, getting your art on the internet, presentation, entering art competitions and contemporary and traditional art history. 12 students per class.

Homemade & Homegrown – Indoor Mini Market

9.30 am - 1.00 pm Saturdays

For all enquiries or to register for a class, contact Erryn Willcox or Carl Fairweather at the contacts below.

41 Princes Street, Hāwera | Phone or text: 027 361 6930

Facebook: [South Taranaki Creative Space](#) | Email: southtaranakicreativespace@gmail.com

Hip Hop Dance Classes – South Taranaki



Term Three: Friday Classes - \$10 per class

Junior Classes (Ages 5 - 12 years) 4.00 pm - 5.00 pm

Open Class (Ages 13 years +) 5.00 pm - 6.00 pm

Senior Citizens Association Hall, 81 Victoria Street, Hāwera

Fusion & Flow are inspired by the art elements of Hip Hop Dance and Culture and are creating opportunities for young people to engage, express and evolve through dance. Family and community-focused, Fusion & Flow offer a safe environment for youth to have the freedom to express in an active learning environment, movement and growth in the arts. Help spread the word to young people that love to dance or just want to try something new in South Taranaki. New classes/towns will be announced once details are confirmed – follow on Facebook for updates. Classes are delivered online until the return to Level 1.

For more information, Term 4 updates or to register, visit the [Website](#)

Facebook: [Fusion & Flow – Taranaki](#)

South Taranaki Event: Turkey the Bird Goes Brass

7.30 pm Friday 12 November 2021 - Eltham Town Hall

7.30 pm Saturday 13 November 2021 - Pihama Hall

New Zealand's folk trio, Turkey the Bird teams up with the Hāwera Brass Band for this unique performance, with beautiful three-part harmonies, toe-tapping rhythms, and catchy folk songs from their recently released debut album. The bearded trio features Andre Manella from Switzerland, Adrian Whelan from Ireland, and Sol Bear Coulton, the token kiwi! Admission \$35.00 Adult. Duration 100 minutes, with interval.

Tickets can be purchased from ticketek.co.nz, 0800 842 538 and also from South Taranaki i-SITE.

For more information visit www.resetfest.co.nz



Ōhawe Creative Collective

29 October – 7 November 2021

Open: 9.00 am – 4.00 pm daily

Ōhawe Hall, Ōhawe Beach

A pop-up collective of locals artists at Ōhawe Hall, coinciding with the regions Garden Festivals and the Taranaki Arts Trail. Just 8km north of Hāwera along Surf Highway 45, Ōhawe Beach is a great spot for a picnic and to enjoy the South Taranaki coastline. Local artists present art, carving, crafts, plants and produce in the local community hall. Artists are Caryl Murray, Amy Thompson, Ange McAlpine, Tracey Christodoulou, Reeve Hokopaura, Myron Bent, Anne Goulden and Sylvia Thomson. Free admission, wheelchair accessible.



Taranaki Arts Trail 2021

Taranaki Arts Trail Event: 29 - 31 October & 5 - 7 November 2021

Taranaki Arts Trail collaborates with the Taranaki Garden Festival for the second year. This year the Arts Trail offers the first six-day event, running over two consecutive weekends. 84 artists are taking part all around the mountain. Pick up a brochure from i-SITES and galleries or check out the website to plan which studios to visit.

South Taranaki Listings

Hāwera/Ōhawe Beach: Cherol Filbee, Caryl Murray, Myron Bent, Kerry Walker

Ōpunakē: Claire Jensen, Rhonda Crawford, Viv Davy

Eltham: Dan Mills

Pictured left: Feathers by Claire Jensen

For more information visit: www.taranakiartstrail.co.nz

Lysaght Watt Gallery – Spring Exhibitions



Ashlee Robinson: Taranaki Te Maunga

Until 9 October 2021

Ashlee Robinson is a South Taranaki based contemporary Māori artist who sells original art and prints of her work. *(pictured left)*

Hāwera Camera Club

Until 9 October 2021

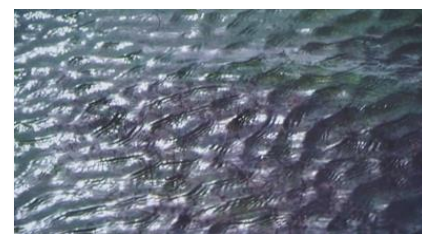
Showcasing work by Hāwera Camera Club members; landscapes, portraits, nature, drone shots, infra-red, composites and more.

Also featuring award winning photographs from the 2021 Taranaki Interclub Competition.

The Land & The Lake: Viv Davy & Su Hendeles

11 October - 6 November 2021

Two artists explore the physical world of their natural environment. Su focuses on the lake in her body of photographic and video work, *Waterlilies: An Ode to Lake Horowhenua*. *(pictured right)* Viv examines the land; landforms, strata, contours, textures, and light plays that she witnesses across Taranaki.



Watercolour Reflections - Past and Present: Pam Lines

8 November - 4 December 2021

Lines is a landscape watercolour artist living at Waihi Beach. The dunes, harbour, distant hills and the tidal flow of the sea all inspire her work. With a limited palette and simplicity of the image, she describes a sense of place, for the viewer to make a connection. Pamela (née Dunlop) was born and raised in Hāwera and is looking forward to coming back to exhibit in the town where her artistic journey began. Website: www.pamlines.com

The Gallery is rescheduling their AGM as soon as possible. If you are interested in being part of the Gallery team, please contact Helen on 021 145 0570, or visit the website to find out more - [Become Involved | Lysaght Watt Gallery](#)

Lysaght Watt Gallery 4 - 6 Union Street, Hāwera | Phone 06 278 7611
Website: www.lysaghtwattgallery.co.nz | Facebook: Lysaght Watt Gallery
Open Monday - Friday 10.00 am - 2.00 pm Saturday 10.00 am - 1.00 pm

The Village Gallery – Spring Exhibitions

Creations in Fibre

Until 24 September 2021

Work by members of Central & South Taranaki Creative Fibre Groups.

Hive Mind

28 September - 22 October 2021

Curated by South Taranaki District Council Arts Co-ordinator, Michaela Stoneman. Celebrating the wide diversity of creativity throughout the district. Featuring hexagonal artworks by 43 South Taranaki artists from Waitotara to Puniho and students from Eltham Primary School. *Right: Painting by Mark Bellringer*



The Potters

25 October - 19 November 2021

Margaret Foley, Robyn Smaller and Donna Hitchcock have been exhibiting together for over a decade, and this cash-and-carry exhibition is one of the highlights of the Gallery's annual programme. The Potters create mainly hand-built, quirky pottery and decorative mixed media pieces for the home and garden. Opening hours will be extended during the Taranaki Arts Trail and the Fringe Garden Festival with the Gallery being a 'place of interest'.



Sharing Shots - Stratford Camera Club

22 October - 27 December 2021

Photography Exhibition by Members of the Stratford Camera Club, curated by Sue Morton, Club President. Members will be displaying a variety of images, both digital and prints, showcasing their impressions of the world around them.

Left: Three Sisters by Sue Morton

Members Exhibition

17 January - 11 February 2021

The Gallery Shop: Members can display items for sale for four to six weeks periods throughout the year. 25% commission on sales. Cards, prints, paintings, pottery, photographs, jewellery, and handmade accessories for sale.

The Village Gallery, 166 High Street, Eltham | Contact: Lorna Davies 06 765 8121 or 027 328 3877 to book an exhibition

Open: Tuesday - Saturday 10.00 am - 3.00 pm (closed Saturdays between exhibitions)

Facebook: Village Gallery Eltham NZ | Email: villagegalleryeltham@gmail.com

Love Begins
At 5♥



Hāwera Repertory News

75th Jubilee Celebrations: 19 - 23 October 2021

Love Begins at 50

This performance season was affected by the Covid-19 Lockdown and will be rescheduled soon. The cast and crew have worked hard and deserve the chance to perform. If you have purchased tickets for either *Love Begins at 50* or *75th Jubilee Celebrations*, you will be contacted directly by iTICKET for refunds.

For more information contact hawerareporthy@gmail.com or visit www.hawerarep.org

Creative Taranaki

Creative Taranaki aims to support the creative communities in Taranaki to develop opportunities for regional collaboration to see growth, enablement and support for the vibrant arts sector. Artists and creatives are welcome and encouraged to sign up for email updates and follow the Facebook page to get involved in this kaupapa - lots of new developments are happening behind the scenes.



Facebook: Creative Taranaki | Email: creativetaranaki@gmail.com

Gallery Pātea - Spring Exhibitions



Kaitiakitanga – Guardianship

Until 16 October 2021

Event: Meet the Artists 11.00 am Sat 18 September 2021

Kaitiakitanga, the act of protecting, guarding. An exhibition to connect with NZ Conservation Weekend Te Wiki o te Reo Māori - Māori Language Week. A range of South Taranaki artists have created artworks inspired by one or more themes that focus on the protection of our taonga.

Left: Painting by Dan Mills

Connections

3 - 27 November 2021

Event: Meet the Artists - 11.00 am – 3.00 pm

Saturday 6 & 25 November 2021

During lockdown 2021 we have had time to reassess how we interact with others; living simpler and being more reliant on our own resources for food, entertainment, exercise, how we connect to others outside our bubble. This exhibition will reflect on our connections to each other, whanaungatanga, our place in the environment, our neighbourhood, and how that

might be manifested. It includes reference to personal, family, and environmental health and living positively. Local artists are invited to create work that celebrates positive family values. Free plants and pavement chalk drawing at Saturday events.

Small Treasures

1 - 24 December 2021

Artists and craftspeople present handcrafted work suitable for a range of gifts, from painting, hand-pulled prints, stonework, adornment, and a variety of other works.

Gallery Pātea is a non-profit organisation run by volunteers. If you're keen to help out, please get in touch.

Children's Art Classes with Jenni Corbett: Every second Wednesday during school terms

Print Sessions with Gabrielle Belz: Tuesdays, for 9 -15-year-olds. Supported by Creative Communities.

Adult Art Classes - Please contact the Gallery with your interest - acrylic, watercolour, drawing, print.

Gallery Pātea, 56a Egmont Street, Pātea

Open: 11.00 am - 3.00 pm Wednesday - Saturday or by appointment

For more information text Gabrielle Belz 021 0813 8355 | Facebook: Gallery Pātea | Email gallerypatea@gmail.com

Aotea Utanganui – Museum of South Taranaki



Aotea Utanganui has begun the release of mini-documentaries from their Pouaka Kōrero-Talking Box project. There are 20 films in all, which have an emphasis on people from the South Taranaki region, their passions, interests and projects. The series was filmed and edited over the past year by Keith Finnerty of Cat and Mouse Productions, with the assistance of museum staff. The films will be shown at the museum and will also be released online in October at: <https://vimeo.com/aoteautanganuimuseum> This project was funded by Taranaki Regional Council.

Zoomed In

December 2021 - May 2022

This exhibition consists of photographs and items from the collection. What happens when you zoom in on old photographs? What is going on behind the scenes that are not immediately visible in the original image? What extra details can be picked up? Who is doing what outside of immediate view? There will also be a display of all things lens-orientated: cameras, binoculars and telescopes. Come and explore all things teeny-tiny in our collection with the assistance of a magnifying glass - a great children's activity whether for your own child or inner-child.

Aotea Utanganui - Museum of South Taranaki, 127 Egmont Street, Pātea | Phone: 06 273 8354

Facebook: Aotea Utanganui | www.museumofsouthtaranaki.wordpress.com

Email: museum@stdc.govt.nz | Open: 10.00am - 4.00pm Monday - Saturday

Forbes & Flay Studio - Ōpunakē

Botanical Drawing Art Club

10.00 am - 2.00 pm, 3 October & 5 December 2021

Join Tabatha Forbes for a Sunday art class for those wanting to spend a few hours working on their plant drawing or continue on works started from previous classes. Cost: \$80 - Includes all materials. Discounts for returning students.

Plantgirl & Co: POP-UP Shop & Exhibition

10.00 am - 3.00 pm 29 October - 8 November 2021

During Garden Festival week the gallery will be full of botanical works, fine art prints and a POP-UP shop selling locally made flora and fauna themed products, including *Plantgirl & Co* cards and calendars, *Darling Starling* limited edition handpainted t-shirts, plants, pots and more.



Nature Journal Weekend

10.00 am - 3.00 pm 13 & 14 November 2021

With Tutor Tabatha Forbes. For those who love nature, art, gardens and travel, keeping a nature journal is a wonderful and therapeutic art practise that includes drawing, mixed media and writing/notetaking. The workshop includes a walk to collect the weekends drawing material around Ōpunakē Lake (weather permitting).

Cost: \$180 - includes all materials to use in class and a take-home journal. Discounts for returning students.

Forbes & Flay Studio, 40 Tasman St, Ōpunakē | Email: drtab72@gmail.com | Facebook: Forbes and Flay

from out of the blue studio gallery - News

Diaries

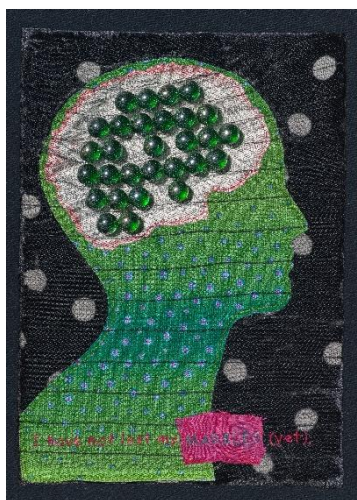
Until 11 October 2021

Featuring year-long works by Jenny Bielawski, Wendy Johnstone and Viv Davy and 90 day works by Christine Keller and Dale Copeland. These works are a fascinating view of how artists continue routine artistic practise over extended periods. Confined formats, sets of rules, unusual materials and attention to small details are some of the common features of the widely divergent works in this curated exhibition.

Viv Davy - From my Land

14 October - 8 November 2021

As part of the popular Taranaki Arts Trail, Viv will show new works as well as botanically dyed fabrics, threads and papers. Pop-up workshops will be conducted through the week of the - these will be posted on the gallery website and Facebook. Open extended hours: 9.30 am – 5.00 pm from 28 October- 8 November.



Jeanette Verster - I Have Not Lost My Marbles (Yet)

11 November - 20 December 2021

Well known, award-winning Taranaki artist Jeanette Verster has flexed her wonderful imagination again with a collection of works taking a sideways look at Old Age. Drawing on the structure of an alphabetical book each letter has been assigned a special meaning in its own carefully designed and executed expression. An awesome collection for all ages to enjoy.

Left: M for Marbles by Jeanette Verster. Photo Credit: Derek Hughes

WORKSHOP: Listening to the Cloth with Louise Cook

9.00 am - 3.00 pm. Date to be confirmed

A workshop for people who love handwoven cloth and want to make no-waste garments using their special cloths. Louise will teach the Saori sewing and cutting methods as well as teaching draping for garment design. A wonderful opportunity to learn how to showcase your beautiful cloth.

For full details and workshop registrations, visit the gallery website. Contact via email to join the digital mailing list.

Contact: Viv Davy. Phone: 021 407 424 | 18 Halse Place, Ōpunakē

Website: www.fromoutofthebluestudiogallery.com | Open: 1.00 pm - 5.00 pm Thursday - Monday or by appointment

Facebook: from out of the blue studio gallery | Instagram: threadthinker | Email: viv@blacknosugar.com

Everybody's Theatre - Ōpunakē

Ōpunakē's historic theatre restored to its former glory. In addition to the latest new releases, the Theatre hosts Boutique Nights, playing a selection of classic, foreign and fringe films. Cinema and event bookings can be made online. Check the website for screenings, events and tickets. Enquiries for hire for special events are welcome.

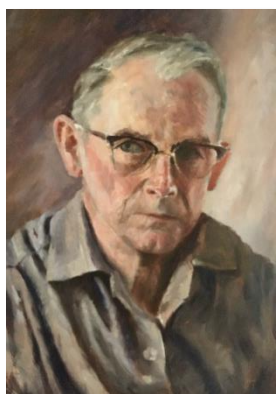


Special Event: *A One Night Stand*

8.00 pm Friday 22 October 2021

DIY Comedy presents a night of comedy with MC Richard Dryden, Jessica Charlotte, Ben Tito Caldwell and more. Pre-booked tickets are \$20 from Kiwitickets or Everybody's Theatre website. Door Sales \$30.

Everybody's Theatre, 72 Tasman Street, Ōpunakē | Phone: 027 383 7926
Website: www.everybodystheatre.co.nz | Email everybodystheatre@gmail.com



Pihama Lavender – Exhibition

Photography & Art of E.C. Lackland - A Historical Reflection

29 October – 7 November 2012. Open Hours: 9.30 am - 4.30 pm

Coinciding with The Taranaki Garden Festival and Taranaki Arts Trail, this exhibition features the work of E.C. Lackland, one of New Zealand's photographic pioneers and founder of Lackland's photographic business. He was also a recognized artist. Featuring some remarkable historical photographs captured during the 1927 Royal Tour and the 1931 Napier Earthquake and other artistic shots. Entry fee of \$2 per person to the garden.

Pihama Lavender, 3510 South Road, Pihama, SH 45 | Phone: 06 7617012 | Website: www.pihamalavender.com

Puke Ariki - Autumn Exhibitions



This is Our World - Taranaki Youth Photography

1 October 2021 - 6 March 2022

This is Our World explores the everyday experiences of Taranaki's young people, revealing unique viewpoints on the local urban environment as seen by them. Over 2020 and 2021, rangatahi participating in photography courses at ZEAL Taranaki documented their surroundings while experimenting with composition, light and shadow, contrast and exposure. With many using phone cameras, each student captured places and spaces that appealed to them, with some drawn to nature while others examined architecture, light, or colour. Their creative talent reveals features of the world around us that often go unnoticed, bringing our attention to the patterns, relationships, and gaps in between otherwise familiar locations.

Puke Ariki is proud to partner with ZEAL Taranaki to bring the work of these young people – our future artists and innovative thinkers – into the light. ZEAL is dedicated to helping youth across Aotearoa discover, express and develop their unique creativity. *Left: Photograph by Tara Newman*

TU MEKE TŪ!

2.00 pm Thursday 14 October, 10.30 am Friday 15 October & 2.00 pm Friday 15 October 2021

If you're looking for something fun and educational for the tamariki over the school holidays, look no further than Tu Meke Tū! The best-selling book is being brought to life on the stage for the very first time. Join two unlikely heroes, Tere the excitable tūi and Taitū the flightless takahē, as they work together to outwit Stan, the sly stoat, who has a beady eye on our native birds. This beautiful story will teach young tamariki about friendship, courage and discovering that sometimes it's our differences that make us truly special. Recommended for ages 3-8 years. Tickets: \$25 from Ticketek.

Puke Ariki, 1 Ariki Street, New Plymouth | Phone: 06 759 6060 | Open: 10.00 am - 5.00pm 7 days | Free Entry
Website: www.pukeariki.com | Facebook: Puke Ariki: Museum-Library-Visitor Information

West African Drum & Dance Weekend

4 & 5 December 2021

Eltham Presbyterian Campground, 30 Bridger Street, Eltham

Join amazing performer Koffie Fugah for a fun weekend learning West African Drumming and Dance. Experience something new with a welcoming group of people. Koffie Fugah is a master drummer, dancer and storyteller from Ghana. He has been performing and teaching traditional African songs, dance and drumming for over 20 years. In 2013 he migrated to New Zealand and founded the Kadodo West African Drum and Dance School. For the past 5 years, as Kadodo's Artistic Director, he has been facilitating drum and dance workshops for schools, community and corporate clients all over New Zealand. His life-long passion is sharing the love of his culture with people and encouraging them to use music to express themselves joyfully. Camping available, \$130 per person for two nights, including classes. Day attendance is \$30 per day per person or \$50 for two days. Drum hire is available for \$5. Ngoni and Yoga classes will be available, please indicate your interest in these activities. Supported by South Taranaki Creative Communities. Open to all ages and experiences.



For more details register your interest contact Nikki Watson: Email: art4thahart@hotmail.com or phone 021 242 4600

Quirky Fox – Art + Framing



Small Wonders

Featuring bite-size original artworks and prints from a selection of inspired creatives. Each 10 x 15cm work was produced during Lockdown. The full exhibition is available to view [online](#). A selection of works will be available to view in the gallery but some works are still in transit due to the quick nature of this exhibition and the ongoing effect of lockdown on postage. We recommend viewing the pieces online for the full experience.

Quirky Fox, 205a High Street, Hāwera | Phone: 06 278 6909
Open: Monday - Friday 10.00 am - 4.30 pm Saturday 10.00 am - 12 noon
Facebook: Quirky Fox: Art & Framing | Website: www.quirkyfox.co.nz

Percy Thomson Gallery – Spring Exhibitions

Marti Friedlander: Portraits of the Artists *Right: Self Portrait by Marti Friedlander*
Until 19 September 2021

Marti Friedlander (1928-2016) is one of our most prominent and highly regarded photographers. Her work has been central to New Zealand's social and cultural life. Compelling images of artists, writers, craftspeople, actors, who were prominent players in expanding and vitalising cultural fields in New Zealand in the 1960s, 1970s and later. Curated by Dr Leonard Bell. Toured by the New Zealand Portrait Gallery.

Dale Copeland Collection
Until 10 October 2021

Dale Copeland's sculptural and wall-hanging assemblages and International Collages from around the world are for sale.

Pop-Up Cash 'n Carry
23 September - 10 October 2021

Artworks by local artists from Stratford, Inglewood and Eltham. You can purchase and take it away with you.

Embroiderers' Guilds' Biennial Exhibition
16 October - 7 November 2021

Embroiderers Maree Burnnand and Jo Dixey will be exhibiting in Gallery 2.

Percy's Place, the gallery shop, is open Monday - Friday 10.30 am, Saturday 10.30 am - 1.00 pm, Closed Sundays.



Percy Thomson Gallery, Miranda Street, Stratford | Director: Rhonda Bunyan | Phone 06 765 0917
Open: Monday - Friday 10.30 am - 4.00 pm Saturday - Sunday 10.30 am - 3.00 pm
Website: www.percythomsongallery.org.nz | Facebook: Percy Thomson Gallery

Fenton Street Art Collective – Spring Exhibitions

A Simple Life - Hayley Elliot Kernot

Until 30 September 2021 *Left: Painting by Hayley Elliot Kernot*

Part of Your World - Cherie Dodds

30 September - 22 October 2021

A series of artworks by Cherie Dodds recognising a community that by necessity are educators and advocates for disabilities.

The Taranaki Gate - Ross Whitlock

23 October - 4 November 2021

Shaft of Light & Shutter Stop - Photographers

5 November - 2 December 2021



11 Fenton Street, Stratford | Facebook: Fenton Street Art Collective | Email: fentonartscollective@gmail.com

Open: Sun - Weds 10.00 am - 2.00 pm Thurs - Sat 10.00 am - 4.00 pm | Phone: 021 0299 2839

www.fentonartscollective.co.nz



RESET Festival 2021

5 - 15 November 2020

Following the success of Reset Festival last year, TAFT is excited to return with a 10-day selection of performances, featuring the diversity and quality of talented artists from Aotearoa. Brochures are available at Taranaki i-SITES and venues throughout Taranaki.

For full programme and ticket info/bookings, visit: www.resetfest.co.nz

Taranaki Garden Festival

29 October - 7 November 2021

Experience glorious gardens and events at New Zealand's biggest spring celebration. Formerly the Rhododendron Festival, the Taranaki Garden Festival was established in 1987 and continues to delight people from all over New Zealand. This year the Festival offers an intriguing mixture of both unique and stunning gardens, each with their own story to tell.

Openlands Country Fair

10.00 am – 3.00 pm, Sunday 31 October 2021

Openlands Country Garden, 1064 Auroa Rd, Manaia

The Country Fair is an event for the whole family. Enjoy a day of food, music and hand-crafted quality goods for sale. *Right: Openlands Country Garden*

A Walk Through the Pāst

11.30 am Sunday 31 October, Wednesday 3 November &

Saturday 6 November 2021

Puketarata Garden, 14 Ngawhini Rd, Hāwera

King Edward Park Guided Walk

1.00 am & 2.00 pm Saturday 30 October & Sunday 31 October 2021

Friends of the Park will take you on a guided walk of our nationally significant public park. Free event. Meet at High St/Camberwell Rd entrance gates. King Edward Park, Hawera

Tairoa Lodge House & Garden Tours - Tairoa Lodge, 3 Puawai St, Hāwera

2.00pm Daily during the festival. \$25 pp includes garden entry, house & garden tour & champagne cocktail.



For full information, tickets and bookings, visit www.gardenfestnz.co.nz

Creative New Zealand is the national arts development agency developing, investing in and advocating for the arts. Check out the [Funding calendar](#) for an overview of the support available. Information on all funding opportunities is announced through the CNZ newsletter, [sign up](#) to receive news and updates via email. [Arts Grants](#) offer short-term project funding for New Zealand artists, arts practitioners and arts organisations (including groups and collectives). This funding enables more sustainable careers, encourages innovation and the development of arts practice, and provides opportunities for diverse communities to access the arts. Amount: \$5,000 to \$75,000.

For updates and information on all Creative NZ funding, visit the [website](#) | Facebook: Creative New Zealand

Gover Street Gallery

Over 320 artists are involved in the Gallery, featuring a wide, varied and eclectic mix of artwork for locals and visitors to enjoy. Contact for more information if you would like to be involved or exhibit your work.



EXHIBITIONS:

Kirk Work: 1 October - 7 November 2021

Taranaki Arts Trail Artists Exhibition: 15 October - 15 November 2021

Brenda Cash / Ian Axtell: 15 October - 15 November 2021

Taranaki Arts Trail 2021: 29 - 31 October & 5 - 7 November David Rogers, Laura Buchanan and Rachael Davies

Extended opening hours throughout the festival time - Monday - Sunday 9 am – 6 pm every day.

Ahed Rajjoud / Sonja Reynolds: 19 November - 19 December 2021

Have a Go!: 19 November - 24 December 2021 Open to anyone and everyone to take part. Any medium, any subject, any skill set. On registration, you will receive a free canvas so all artwork is the same size in the exhibition.

19 Gover Street, New Plymouth | To exhibit, register, enquire, contact Heidi on 06 757 4278
Open: Monday - Saturday 10.00 am - 4.00 pm Sunday 12 noon - 4.00 pm. Closed Tuesdays.
Facebook/Instagram: Gover Street Gallery | Email: goverstgallery@gmail.com

The Big Idea

The Big Idea is an online hub for artists of all genres. The Big Idea provides you with daily news updates, the latest jobs and opportunities, events as well as ideas and inspiration from across the creative industries to help you create your own success. The Big Idea is the largest, leading online resource for the arts in New Zealand.

Website: www.thebigidea.nz



Would you or your group like to have information included in the next edition of
Te Tohu a Toi – STATE OF THE ARTS?

Please send concise text and photographs for the Summer Edition (Dec, Jan, Feb 2021) to:
Michaela Stoneman, Arts Co-ordinator: michaela.stoneman@stdc.govt.nz

Send information by:

Monday 22 November 2021

Publish date:

Wednesday 1 December 2021

To unsubscribe to *State of the Arts*, please [email Unsubscribe](#) in the subject line.