

# Te Tohu a Toi

# STATE OF THE ARTS

South Taranaki Arts Bulletin # 43

Autumn 2021

| [Art News](#) | [Opportunities](#) | [Exhibitions](#) | [Art Events](#) |



*Everybody's Theatre Trustees celebrate 100 years*

The **Everybody's Theatre Centennial Celebrations** were held in February. It's been awesome to see the transformation and journey of this historic Ōpunakē facility over recent years by the dedicated trustees, community, collaborators and funders. While many groups and towns would be daunted and overwhelmed by challenges such as earthquake strengthening and major refurbishment, the cheerleaders for Everybody's Theatre have triumphed through hard work and commitment to the cause. The celebration included free movie screenings, lots of dress-ups, live jazz music and dancing.

A new centennial book has been compiled by Maree Drought and Debbie Campbell, showing an in-depth look at the changing face of the Theatre building since 1910. The Theatre hosts special events and runs a monthly Boutique Night, as well as showing new movies on the Coast. Well done to all involved, your achievements are inspirational.

I recently had the pleasure of attending the Hāwera Repertory production of **Bugsy Malone** at another impressive and very well equipped South Taranaki facility, Hāwera Memorial Theatre. I was blown away by the outstanding talent on show by the youth actors, dancers and band, as well as the seamless production, sets and lighting. If you've ever wanted to be a part of the live theatre experience, I encourage you to get involved and join a local group.

Accessibility to arts and creativity is essential for everyone in Aotearoa. Last week, the Minister of Arts, Culture and Heritage, Carmel Sepuloni, confirmed a [new funding framework to support Creative Spaces](#). Creative Spaces are supportive facilities where people with mental health needs, disabled people, and anyone looking for social connection, are welcomed and supported to practice and participate in the arts in their local communities. The availability of these Creative Spaces are vital in our communities as they allow free or low-cost entry into a wide variety of art forms for those who often face barriers when seeking to participate.

Please continue to support and enjoy our local artists, galleries, groups, projects and events. Get in touch with me via email if you need advice or support with applications or help to realise a creative project. Take care and keep creating!  
Ngā mihi,

*Michaela*

Michaela Stoneman | Arts Co-ordinator | South Taranaki District Council | 0800 111 323  
[michaela.stoneman@stdc.govt.nz](mailto:michaela.stoneman@stdc.govt.nz) | [www.southtaranaki.com](http://www.southtaranaki.com)

## South Taranaki Creative Communities Funding

The South Taranaki Creative Communities Scheme provides funding assistance for community-based arts activities in South Taranaki that meet one or more of the following funding criteria:

**Broad community involvement** - A project that will create opportunities for local communities to engage with and participate in arts activities.

**Diversity** - A project that will support the diverse arts and cultural traditions of local communities, enriching and promoting their uniqueness and cultural diversity.

**Young people** - A project that will enable and encourage young people (under 18 years) to engage with and actively participate in the arts.

**The next Creative Communities funding round closes 10 March. for projects that start after 29 April.**

**Round 1 of 2021-2022 opens on 27 July and closes on 27 August for projects that start after 11 October 2021.**



For detailed information and forms, please visit the link [here](#)  
Any enquiries of to discuss an application, email [funding@stdc.govt.nz](mailto:funding@stdc.govt.nz) or phone 0800 111 323 or 06 278 0555



### Proud Aotearoa – Call for Artists

Calling all [LGBTQIA+](#) Artists! Registration is now open for an art exhibition to showcase a range of diverse artwork by LGBTQIA+ artists. Artworks in any media will be considered, beginner artists, youth artists and first-time exhibitors are encouraged. The show will run from 7 June to 2 July 2021 at The Village Gallery in Eltham. Registration closes 8 May, with works to be received by 21 May.

For more information contact Dimmie: [dimmie.danielewski@gmail.com](mailto:dimmie.danielewski@gmail.com) or 020 4139 8092 (text only)  
Website: [www.proudaotearoa.weebly.com](http://www.proudaotearoa.weebly.com)

## Creative New Zealand – Funding Support

Creative New Zealand is the national arts development agency developing, investing in and advocating for the arts. Check out the [Funding calendar](#) for an overview of the support available. Information on all funding opportunities is announced through the CNZ newsletter, [sign up](#) to receive news and updates via email. [Arts Grants](#) offer short-term project funding for New Zealand artists, arts practitioners and arts organisations (including groups and collectives). This funding enables more sustainable careers, encourages innovation and the development of arts practice, and provides opportunities for diverse communities to access the arts. Amount: \$5,000 to \$75,000. Next Round closes 1.00 pm 26 March 2021. Notification 16 April 2021



ARTS COUNCIL OF NEW ZEALAND TOI AOTEAROA

**CELEBRATING 25 YEARS**

*Te whakanui i te rua tekau mā rima tau*

For updates and information on all Creative NZ funding, visit the [website](#) | Facebook: Creative New Zealand



### Creative Taranaki

Creative Taranaki is the working title of a new arts organisation for the region. It will support the creative communities in Taranaki to develop opportunities for regional collaboration to see growth, enablement and support for the arts sector. Last year 'Taranaki 2050' developed an '[Arts Pathway Plan](#)'. During Lockdown a wider group of creatives got together to work out advancing this plan and other ideas, with the main project the development of a Regional Arts Organisation. Over the past few months there has been research and connection made with the other NZ Arts Organisations, a survey completed in Taranaki (with over 270 respondents) and a series of four hui around our Mounga, including Hāwera and Ōpunakē. Artists and creatives are welcome and encouraged to sign up for email updates and follow the Facebook page to get involved in this kaupapa and development.

Facebook: Creative Taranaki | Email: [creativetaranaki@gmail.com](mailto:creativetaranaki@gmail.com)



## Taranaki Arts Trail 2021

**29 - 31 October & 5 - 7 November 2021**

The Taranaki Arts Trail Artists registration is now open until the end of March. Following from last years success, the Trail is working in collaboration with the Taranaki Garden Festivals. Held over two weekends this year, the event offers options for artists to open during the week in between, offer workshops to the public or have a rest. 80,000 people visited Taranaki for the joint events in 2020, 30,000 up on 2019 numbers. The Taranaki Arts Trail is a must for all artists to promote themselves and their work.

For more information and to register, visit: [www.taranakiartstrail.co.nz](http://www.taranakiartstrail.co.nz)

## Taranaki National Art Awards 2020

**AGM: 1.00pm Wednesday 10 March 2021, Sandfords Events Centre, Ōpunakē**

Following a highly successful event in 2020 with record art entries and sales, the Taranaki National Art Awards Committee are gearing up to celebrate the 20<sup>th</sup> anniversary of the event in 2021. If your keen to get involved in helping to run this iconic event in Ōpunakē, come along to the AGM or contact the committee through their website.

*Pictured right: 2020 Committee Choice Award winner, Jana Branca*



Facebook: [Taranaki National Art Awards](https://www.facebook.com/TaranakiNationalArtAwards) | Website: [www.taranakiartawards.co.nz](http://www.taranakiartawards.co.nz)

## South Taranaki Creative Space

South Taranaki Creative Space is a not-for-profit community-focused creative hub, providing a welcoming space for people to meet, interact, learn new creative skills and network with other creative people.



### **Creative After School Kids Art Classes 2021**

Mixed media classes to help young creatives with their artistic development exploring different ideas and mediums.

Classes run from 3.30 pm - 5.00 pm. All classes are limited to 10 students per class.

**Mondays:** 12 - 13+ years.

**Tuesdays:** 10 - 11 years.

**Wednesdays:** 8 - 9 years.

**Thursdays:** 5 - 7 years.

### **Creative Adult Art Classes - Beginners: Thursdays 6.30 pm - 8.30 pm**

A beginners introduction to a variety of creative mediums. A great class if you are reawakening your creative journey. 1st term 2021 is an introduction to acrylic painting. 10 students per class.

### **Creative Adults Art Classes - Experienced: Tuesdays 6.30 pm - 8.30 pm**

An art class for experienced creatives who have the basics covered and would like to expand on what they have already learnt and explore different ideas and mediums. This class will include aspects of professional practice, documenting your work, getting your art on the internet, presentation, entering art competitions etc. Classes will also involve art history both contemporary and traditional. 10 students per class.

For all enquiries or to register for a class, contact Erryn Willcox or Carl Fairweather at the contacts below.

**41 Princes Street, Hāwera | Phone or text: 027 361 6930**

Facebook: [South Taranaki Creative Space](https://www.facebook.com/southtaranakicreatespace) | Email: [southtaranakicreatespace@gmail.com](mailto:southtaranakicreatespace@gmail.com)

## Hāwera Brass Band

A community brass band located in Hāwera, South Taranaki. The Band has a core group of committed local members and are always happy to welcome new people. The Band performs concerts, local events and occasionally attend a brass band contest. Rehearsals are held on Wednesday nights from 7.30 pm - 9.30 pm at the Hāwera Pipe Band Hall on Caledonia Street, Hāwera. All welcome.

Facebook: [Hāwera Brass Band](https://www.facebook.com/HaweraBrassBand)



# Lysaght Watt Gallery – Autumn Exhibitions & News

## **Tū Tama Wāhine o Taranaki - Exhibition**

**Until 6 March 2021**

Tū Tama Wāhine o Taranaki is a Kaupapa Māori development and liberation organisation that is wāhine led and is about whānau revitalisation and decolonisation. This exhibition presents photographs of Taranaki wāhine moko kauae by Tania Niwa. Capturing personal symbols of cultural resistance whilst celebrating the recovery of the art of Pūkauae as a ritual for indigenous healing and regeneration. *“This is about healing ourselves, healing our Tūpuna and healing our whenua; because we are connected, women and land are intimately connected”.*



*Pictured left: The Whanau Trophy*

Dan Mills is a fine art and mural painter who has recently relocated to Eltham. He is known in Hāwera for his recent murals at Hāwera RSA and the southern entrance railbridge. For this show, Dan presents a suite of vibrant, large-scale oil and aerosol paintings on canvas, exploring dynamic colour fields and compositions with a hint of surrealism. Meet the artists and curators at the opening event. All welcome.

## **A Reason For Art**

**7 - 24 April 2021**

An exhibition showcasing the creativity of local artists with intellectual disabilities. It showcases the talents and achievements of these dedicated artists and enables them to have an opportunity for recognition and to sell their work.

## **Functional Creativity**

**26 April - 15 May 2021**

Gallery 1: An exhibition on functional and sculptural pottery by experienced Whanganui potter Rob Housley.  
Gallery 2: Collaborative works in pottery and wood from Ironsand Studio in Whanganui.

## **Redecorating Taranaki & Paintings by Dan Mills**

**10 March – 1 April 2021**

**Opening Event: 6.00pm Tuesday 9 March 2021**

NPDC's Puke Ariki Heritage Collection contains medals, trophies and awards throughout New Zealand history. It tells tales of wartime bravery, sporting skill, and public recognition. They show us who we were and what values were important to us in the past. But what is important to us now? What has changed? New Plymouth jewellers Jennifer Laracy and Sam Kelly asked locals for their ideas, running a series of community workshops inviting people to talk about and design a medal for someone they think deserves to be honoured. Taking inspiration from those stories and the objects in the museum's storeroom, Jennifer and Sam have created ten new awards that represent what we value in Taranaki today. Developed and toured by Puke Ariki Museum, supported by South Taranaki District Council.



*Abstract Expression in Yellow by Dan Mills*

**LYSAGHT WATT  
ART TRUST  
AWARD**

## **Lysaght Watt Trust Art Award 2021**

Entries for the 2021 Lysaght Watt Trust Art Award are now open and will be accepted until 31 March 2021. The theme is open - any subject or artistic expression is welcome. For more information, email [artawards.lwg@gmail.com](mailto:artawards.lwg@gmail.com) or visit our [website](#) to download the application form and terms and conditions. The exhibition will run from 24 May - 19 June 2021.

**Lysaght Watt Gallery 4 - 6 Union Street, Hāwera**

**Website: [www.lysaghtwattgallery.co.nz](http://www.lysaghtwattgallery.co.nz) | Facebook: Lysaght Watt Gallery**

**Open Monday - Friday 10.00 am - 4.00 pm Saturday 10.00 am – 1.00 pm | Phone 06 278 7611**



## **Hāwera Theatre Trust Singers**

**7.00 pm – 9.00 pm Tuesdays**

**Hāwera Community Centre Hall Lounge**

The Hāwera Theatre Trust Singers are a community choir. Anyone with a passion for singing is welcome to join, no audition required. All ages and gender are welcome, but to enhance the balance of voices, they are keen for more tenors and basses. The group has a musical director and pianist to assist in the learning of harmonies, which are often four

part. Singers do not need to be able to read music to join, most choir members learn by ear.

**For any further information, contact choir manager Judy Brown - 027 278 5834**

# The Village Gallery – Autumn Exhibitions

**The Aussie Influence – Glenys Howland and Ian Littlewood**  
Until 12 March 2021

**Twenty Years On (2001 to 2021)**

**16 March - 9 April 2021**

An exhibition to celebrate the 20<sup>th</sup> anniversary of the Gallery's opening in the original Bridge Street location on Friday 30 March 2001. Some of the foundation members and a number of artists who have contributed to the success of the Gallery over the years will have work displayed.

**Birthday Function: 7.00pm Friday 26 March**

Celebrate 20 years with the Gallery.

*Pictured right: Watercolour by the late Jim Haywood*



**Going with the Flow**

**13 April - 7 May 2021**

Open to all Taranaki artists, with a theme related to 'flowing'. It may be about water, wind or hair, the spread of ideas or purely abstract forms. Let your imagination loose! Entry forms and conditions at the gallery, or contact Lorna by email or phone: [ahuroa@farmside.co.nz](mailto:ahuroa@farmside.co.nz) \$5 per entry (limit of two entries), due by Wednesday 31 March. Artworks delivered to the Gallery Friday 9 April 2021.

**Members Autumn Exhibition**

**11 May - 4 June 2021**

Friends of the Village Gallery artists are not restricted to the 'Autumn' theme and all mediums are welcome.

**Sales Table:** Fundraising sale will continue while stocks last. Art magazines are free for inspiration and information. Thanks to all generous supporters for donating goods to help raise funds for the Gallery.

**The Gallery Shop:** Members can display items for sale for four to six weeks periods throughout the year. 25% commission on sales. Cards, prints, paintings, pottery, photographs, jewellery and handmade accessories for sale.

**Friends of the Village Gallery Membership:** Subscriptions only \$15 per year (due 1 April). Members can submit original artworks into Members' Exhibitions three times a year and in the Gallery Shop.

**The Village Gallery, 166 High Street, Eltham | Contact: Lorna Davie 06 765 8121 or 027 328 3877 to book an exhibition**

**Open: Tuesday - Saturday 10.00 am - 3.00 pm (closed Saturdays between exhibitions)**

**Facebook: Village Gallery Eltham NZ | Email: [villagegalleryeltham@gmail.com](mailto:villagegalleryeltham@gmail.com)**



## Gallery Pātea

Gallery Pātea is a non-profit organisation, relying on support from volunteers. If you're keen to help out, please get in touch. Gallery Pātea promotes creativity in the South Taranaki area and urges any local artists to bring in their work - bone carvers, stone workers, potters, painters, printmakers, kairaranga and other creative works. A great gallery to see a range of art.

*Pictured left: Watercolour by Jonny de Painter*

**Gallery Pātea, 56a Egmont Street, Pātea**

**Open: 10.00 am - 3.00 pm Wednesday - Saturday or by appointment**

**For more information text Gabrielle Belz 021 0813 8355 | Facebook: Gallery Pātea | Email [gallerypatea@gmail.com](mailto:gallerypatea@gmail.com)**

## Pātea Open Mic Sessions

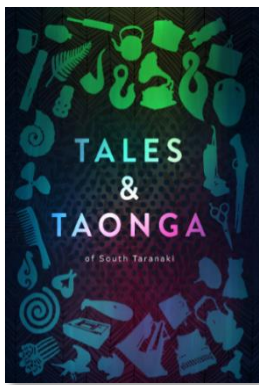
**12 noon - 3.45pm Saturday 27 February & Saturday 24 April 2021**

**Aotea Utanganui – Museum of South Taranaki**

Join local musician Kimba Mallows for this bi-monthly event. Try out your skills with other talented local musicians, singers and performers. This day is open to all skill levels and offers a chance to jam with others. Fun for the whole whānau. Play, sing, say some poetry or just enjoy the performances.



**Facebook: Patea Open Mic | For more information, contact Kimba Mallows 027 640 8137**



## Aotea Utanganui – Museum of South Taranaki

### **Tales and Taonga – Exhibition and Whakapukapuka**

**Until April 2021**

This exhibition portrays an eclectic mix of objects and photographs from the archive spanning the years from the 1850s to the 1990s. There are taonga from the Māori world as well as those from European settlers. *Tales & Taonga* is a 200-page publication, recently published by Aotea Utanganui. A collection of historical and current factual stories submitted by history enthusiasts and written by Museum staff. It is visually rich, revealing many photographs that have never been published before or not seen for the last 100 years. It is available for \$45 at the Museum in Pātea or at the South Taranaki i-Site in Hāwera.



### **Pātea R.S.A Centenary: March – September 2021**

An exhibition commemorating the Pātea Returned Services Association's 100<sup>th</sup> year. Featuring many items that were used in the wars, from a shovel brought back from the trenches of World War I to the Pātea RSA's honour board.

### **Cinema: Waitangi: What Really Happened (2011)**

**Daily Screenings, Museum Theatre - February - August 2021**

This docudrama follows an imaginary news reporter who travels back in time to cover the days leading up to the signing of the Treaty of Waitangi on 6 February 1840. Dropping the usual solemnity surrounding the founding document of Aotearoa, it uses humour and asides to the camera to evoke the chaos and motives behind the Treaty. Written by Gavin Strawhan, with input from novelist Witi Ihimaera.

### **Event: Remember When**

**10.00 am – 12 noon, Wednesday 14 April 2021. Hāwera Assembly of God, High Street, Hāwera.**

Museum Team Leader, Luana Paamu will present a memory-inducing segment as part of Heritage and Family Week. Together with photographs and items of yesteryear from the collections of Aotea Utanganui, let Luana take you on a journey down memory lane.

**Aotea Utanganui - Museum of South Taranaki, 127 Egmont Street, Pātea | Phone: 06 273 8354**

**Facebook: Aotea Utanganui | [www.museumofsouthtaranaki.wordpress.com](http://www.museumofsouthtaranaki.wordpress.com)**

**Email: [museum@stdc.govt.nz](mailto:museum@stdc.govt.nz) | Open: 10.00am - 4.00pm Monday – Saturday**

## Pātea Community Creative Group

**10.30 am – 3.00 pm Tuesdays**

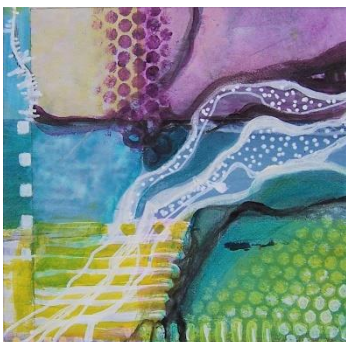
**Old Folks Hall, 139 Egmont Street, Pātea**

An opportunity to have a go at drawing, painting, sculpture or carving – all levels welcome to join this creative group. Find out which media you like working with most after three sessions to experiment and explore using a range of materials. Connected to the Taranaki Retreat, the sessions offer a space to connect with others, explore your talents and have fun. Guest artists will be brought in to support the group. Gold coin koha appreciated to cover materials and a cuppa. All welcome.



**For information, contact Co-ordinator Mareta Marsters-Grubner: Phone 027 841 1135**

**Email: [maretamarsters@gmail.com](mailto:maretamarsters@gmail.com)**



## Virtual TART – Autumn Exhibitions

Virtual TART is an online network and gallery showcasing a wide range of Taranaki artists and related projects. Facilitated by artist Dale Copeland, regular newsletters offer local and international opportunities to exhibit and other creative projects to participate in.

### **Unlimited Palette – March/April 2021**

Artwork by four women artists from Waihi, Coromandel. Four completely different styles and media, artist friends who meet for coffee and to talk about art.

*Pictured left: As the River Runs by Berys Days*

Dale Copeland of Puniho is having a productive year and has uploaded new assemblages in her Showcase section.

**For more information visit: [www.virtual.tart.co.nz](http://www.virtual.tart.co.nz)**

## Everybody's Theatre

Celebrating its Centennial in 2021, Everybody's Theatre in Ōpunakē is an elegant historic theatre in Taranaki, restored to its former glory. In addition to the latest new releases, the theatre also hosts boutique nights, playing a selection of classic, foreign and fringe films. Bookings can now be made online. Check the website for screenings, events and tickets. Enquiries for hire for special events welcome.

**Boutique Night: 7.00 pm Sunday 7 March: Cousins**

**Special Showing: 7.00 pm Saturday 3 April: Mick Fleetwood & Friends**

**Boutique Night: 7.00 pm Sunday 4 April: The Father**



A new book compiled by Debbie Campbell and Maree Drought celebrates 100 years of the Theatre building. Full of photos and faces that will bring back many memories to all those people who have attended or worked in the Cinema during its lifetime. Get in contact via email or through the website to purchase.

**Everybody's Theatre, 72 Tasman Street, Ōpunakē | Phone: 027 383 7926**  
**Website: [www.everybodystheatre.co.nz](http://www.everybodystheatre.co.nz) | Email [everybodystheatre@gmail.com](mailto:everybodystheatre@gmail.com)**



### from out of the blue studio gallery

***In Dialogue with Papatūanuku – Birgit Moffatt***

**Runs until 29 March 2021**

Sensitively created works using respected natural materials. *"This new body of work is a sensory exploration and discovery of te taiao, the natural world, that leads to a deeper understanding and re-valuation of my relationship with te ngahere, the native bush. I am exploring the potential of natural materials I am gathering on my daily walks through the bush, at the footsteps of the Tararua ranges. I often come home with my pockets and hands full of precious taonga from Papatūanuku such as bark, sticks, vines and seed pods."* BM

***Made Over – Preserving and Reinterpreting***

**1 April – 10 May 2021**

A curated exhibition celebrating the world of domestic textiles from the past. Many households have collections of linens that are no longer used in daily life but were once important. Invited artists have taken a range of these textiles and used them to create works that elevate and respect the original. Includes work by three international artists.

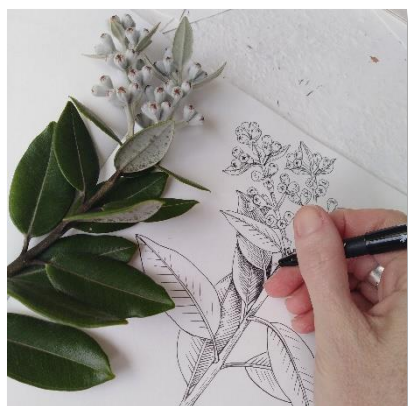
**WORKSHOP: Paper Making Workshop with Viv Davy**

**9.00 am - 12 noon Saturday 10 April 2021**

Using recycled paper, cotton linters and plant-based fibres, Viv will guide you through the processes involved in preparing the pulps and making a range of special papers, including garlic stem, green nettle, dried grasses and leaves and recycled silks. Naturally dyed pulps will also be available to experiment with. Explore this technique further with found materials following the workshop. Booking essential - \$50.00 per person includes all materials and morning tea.

Check the new Gallery website for news, exhibitions, workshop opportunities and exhibition and stock shop.

**Contact: Viv Davy. Phone: 021 407 424 | 18 Halse Place, Ōpunakē**  
**Website: [www.fromoutofthebluestudiogallery.com](http://www.fromoutofthebluestudiogallery.com) | Open: 1.00 pm - 5.00 pm Thursday - Monday or by appointment**  
**Facebook: [from out of the blue studio gallery](https://www.facebook.com/fromoutofthebluestudiogallery) | Instagram: [threadthinker](https://www.instagram.com/threadthinker) | Email: [viv@blacknosugar.com](mailto:viv@blacknosugar.com)**



### Nature Journal Workshop Weekend

**10.00 am – 4.00 pm 13 & 14 March 2021**

**Petal Pusher Florist Studio, 14a Gill St, New Plymouth**

Join South Taranaki based botanical artist Tabatha Forbes to start a nature journal. Including observational drawing, botanical art, nature writing and photography. Explore a number of different styles and techniques including different media such as watercolour, aquarelle pencils, ink and plant pressing. No experience necessary. Cost: \$225 – includes basic materials and journal. Limited numbers, registration essential.

**For more information or to register: Email [drtab72@gmail.com](mailto:drtab72@gmail.com)**

## Marionette Construction Workshop

This workshop by Cherol Filbee is for adults with a sense of fun. Revisit your childhood, play with papier-mâché and learn the steps to create your own 'mythical creature' string puppet. Experience the excitement as it comes to life. Workshops will be held in the artists' studio in Hāwera over eight two-hour sessions.

Sessions start at 7.00pm 13 April 2021. Cost: \$160 - includes all materials.

For more information or to register: Email [icemaiden1@orcon.net.nz](mailto:icemaiden1@orcon.net.nz) or Phone 027 2 444 953



---

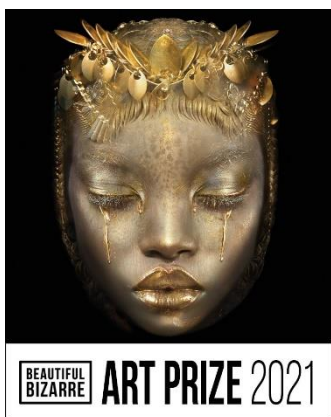
## Quirky Fox Gallery & Framing

### **Metamorphosis - From 5 March 2021**

A photographic exhibition by award-winning international artist Aaron McPollin. Exploring the themes of growth and fragility, the exhibition features macro images of butterfly wings, shibari and photomontages.

### **Carne Griffiths – From 16 April 2021**

Working with tea, coffee, vodka and whiskey, Carne Griffiths's delicate brush strokes and ink details highlight and contrast the confidence and poise his characters portray. Featuring portraits and critters on paper and a selection of lightboxes.



### **Heather Denison – From 28 May 2021**

Waikato artist Heather Denison combines realism and pop surrealism in her solo exhibition: ruru wear rabbit skulls and frogs use herons as their chariots. Featuring a range of oil paintings and an exclusive print launch.

All Quirky Fox exhibitions are available to view and purchase at the Gallery and [online](#).

### **Beautiful Bizarre Art Prize 2021**

The Beautiful Bizarre Art Prize is an annual non-acquisitive international art prize that celebrates diversity and excellence in the representational visual arts. It includes all static mediums including traditional art, digital art and photographic media and all genres, from realism and hyperrealism to pop surrealism and lowbrow.

Visit [www.beautifulbizarreatprize.art](http://www.beautifulbizarreatprize.art) for more information and full entry details.

Quirky Fox, 205a High Street, Hāwera | Phone: 06 278 6909

Open: Monday - Friday 10.00 am - 4.30 pm Saturday 10.00 am - 12 noon

Facebook: Quirky Fox | Website: [www.quirkyfox.co.nz](http://www.quirkyfox.co.nz)

---

## Percy Thomson Gallery - Autumn Exhibitions

### **Glass Art 2021 & Raranga Harakeke**

#### **Take a Second Look – Jennifer Patterson**

Until 21 March 2021

Glass Art is curated by Gallery assistant Amy Taunt, bringing together a number of highly regarded, innovative and infinitely creative New Zealand glass artists. Local textile artist Jennifer Patterson shares her passion for textile art and design.



### **Alby Carter Retrospective**

27 March – 24 April 2021

Born in Wellington in 1949, Carter moved to Taranaki in 1982 and has been a professional artist for 50 years. He works in an expressionist style reminiscent of Toss Woollaston. Inspired by his surroundings of mountain, sea, farm and forest, Carter captures the mood of his environment in his fast-brushed style. Reality is merely his starting point with the aim to make his landscapes 'painterly'. *'If you paint reality perfectly, you aren't doing the artist's job because the art has to tell you something about what the artist feels about what they are painting.'* AC

### **Stratford Art Society Autumn Exhibition**

1 May - 23 May 2021

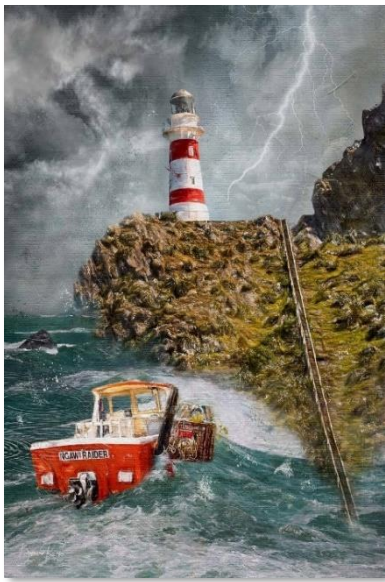
Percy's Place, the gallery shop, is open Monday – Friday 10.30 am, Saturday 10.30 am – 1.00 pm, Closed Sundays.

Percy Thomson Gallery, Miranda Street, Stratford | Director: Rhonda Bunyan | Phone 06 765 0917

Open: Monday - Friday 10.30 am - 4.00 pm Saturday - Sunday 10.30 am - 3.00 pm

Website: [www.percythomsongallery.org.nz](http://www.percythomsongallery.org.nz) | Facebook: Percy Thomson Gallery





## Fenton Street Art Collective – Autumn

### **Next to Nothing – Life Drawing**

**12 March - 1 April 2021**

Works by members of the Life Drawing Group that meets at Fenton Street on Sundays from 4.00 - 6.00pm. This exhibition explores how expansive our perceptions of the human form can be. Supported by Creative Communities.

### **Bronwen Key**

**2 April – 6 May 2021**

Award Winning Wellington based photographer. Blurring the boundary between photography and fine art, Key's work is created from photographic images of NZ scenery, wildlife and kiwiana, blended and enhanced.

### **Julia Newland – Dances on the Earth**

**6 May – 17 June 2021**

Northland painter charts a journey through the amorphous landscape of human memory and connection. Oil and mixed media paintings explore the emotions of women both contemporary and historically.

Gallery, Espresso/Eatery & Gin Distillery. Gin tasting available.

**11 Fenton Street, Stratford | Facebook: Fenton Street Art Collective | Email: [fentonartscollective@gmail.com](mailto:fentonartscollective@gmail.com)**

**Open: Sun – Weds 10.00 am – 2.00 pm Thurs – Sat 10.00 am – 4.00 pm | Phone: 021 0299 2839 |**

**[www.fentonartscollective.co.nz](http://www.fentonartscollective.co.nz)**

## Artists Open Studios - Whanganui 2021

**20 - 28 March 2021**

**Open: 10.00 - 4.30pm daily**

*Artists Open Studios* is your gateway to experiencing the vibrant and diverse arts community of Whanganui and its surrounding districts. Home to many established, world-renown and emerging artists, the city is a premier arts destination for New Zealand.



**For full listings, event information or to download or purchase a booklet, visit: [www.openstudios.co.nz](http://www.openstudios.co.nz)**

## Puke Ariki - Autumn Exhibitions

### **Ngā Hau Ngākau – An Exhibition by Robin Slow, Brian Flintoff and Bob Bickerton**



**Until 25 July 2021 - Temporary Gallery, Puke Ariki Museum**

Ngā Hau Ngākau (Breath of Mine) is an immersive exhibition of luminous paintings, intricately carved taonga pūoro and beautiful music. The show is a collaboration between artist Robin Slow, carver Brian Flintoff and musician Bob Bickerton. The exhibition layout takes the form of the whare whakairo (carved meeting house) and focuses on the role of manu (birds) as messengers in Māori mythology. It acknowledges birds as atua tangata whenua (the original ancestors of our islands) and by honouring the ancient whakapapa (genealogy) of ngā manu, the exhibition offers a different perspective when considering contemporary human experience in Aotearoa. Supported by Wakatū Incorporation.

### **1896: Christopher Aubrey's Taranaki**

**16 April – 15 August 2021 - Lane Gallery, Level 2, Puke Ariki Library**

Christopher Aubrey made his living painting some of our country's most iconic scenery. He travelled around New Zealand from the 1870s to 1905, staying on backcountry stations and sometimes leaving sketches in return for hospitality. Aubrey visited Taranaki in 1896. The delicate and detailed paintings he made on his visit provide a record of the developing region and an optimistic view of colonial life. *1896* presents nine watercolours by Aubrey from the Puke Ariki Heritage Collection on display together for the first time alongside newspaper stories from the year that relates to each of the locations Aubrey captured with his brush.

**Puke Ariki, 1 Ariki Street, New Plymouth | Phone: 06 759 6060 | Open: 10.00 am - 5.00pm 7 days | Free Entry**

**Website: [www.pukeariki.com](http://www.pukeariki.com) | Facebook: Puke Ariki: Museum-Library-Visitor Information**

## Govett-Brewster Art Gallery/Len Lye Centre



### **Brett Graham: *Tai Moana Tai Tangata* - Runs until 2 May 2021**

A truly remarkable show featuring sculptures of monumental proportions and referencing important history from across Taranaki, *Tai Moana Tai Tangata* is a solo exhibition of new work by Brett Graham (Ngāti Koroki Kahukura, Tainui), the Govett-Brewster Art Gallery's 2019 Artist in Residence.

### **Panel Discussion: – Saturday 6 March 1.00 - 2.30pm - Free**

Join three art historians; Anna-Marie White, Christina Barton and Peter Brunt as they discuss aspects of Brett Graham's practice. Introduced by the Gallery's new director Dr Zara Stanhope.

*Pictured left: Brett Graham installation, photographed by Neil Pardington*

### **Len Lye: *Tangibles (1959 – 1961)* - Until 2 May 2021**

#### **Sky Snakes - Until 11 April 2021**

*Tangibles: 1959-1961* presents original and reconstructed works from this important phase of Lye's career including *Firebush*, *Watusi*, *Rotating Harmonic*, *Roundhead*, *Grass* and *Fountain*. The works are accompanied by an extensive display of Lye's sketches and plans for large scale kinetic works such as his *Temple Project*, *Sun, Land & Sea*, *Universe Walk*, *Water Whirler*, and *Convolutions*. *Sky Snakes* is a new large-scale kinetic sculpture from the Len Lye Foundation and Team Zizz!

### **Maioha Kara: *Salutations* - Runs until 15 March**

View a new commission by Maioha Kara (Waikato, Ngāti Kahungunu, Te Arawa, Ngāti Porou) in the Open Window Gallery on Queen St, New Plymouth. *Salutations* acknowledges the changing of the seasons: what was, what is and what will come.

### **Monica Brewster Evening: Christian Penny - Tue 9 March 6.00 – 8.00 pm. \$10 Friends | GA \$ 15 | students free**

A deep and immersive community conversation about the future of Taranaki.

Details on regular talks, tours and programming, from weekly Family Art, monthly Gallery Seniors, Sense Art and exhibition-related events, visit the Gallery [What's On page](#).

Free entry for New Plymouth District residents, Gallery Friends and Under 16's. Seniors \$10. Everyone else \$15.

**Govett-Brewster Art Gallery/Len Lye Centre, Queen Street, Ngāmotu New Plymouth | Phone: 06 759 6060**

**Open: Seven days 10.00 am – 5.00 pm. Closed Christmas Day | Web: [www.govettbrewster.com](http://www.govettbrewster.com)**

## Gover Street Gallery

Gover Street Gallery is an independent, not-for-profit Community Gallery open to everyone and anyone to exhibit, offering a great platform for Taranaki artists to showcase and sell their work. It shows artworks in a vast range of mediums by over 120 Taranaki artists and hosts new feature exhibitions and themed group shows each month.

### **March:**

**Joy: Andrea Connor – Opens 1 March 2021**

**Black White and a bit of Grey – Until 13 March 2021**

**Pure Pastel – Until 13 March 2021 - 10 Taranaki Pastel Artists**

**Universe: Anne Marie Renaud - Opens 14 March 2021**

**spaceCRAFT: Graeme Thompson - Opens 26 March 2021** Assemblage work of post-modernist consideration of outsider art, all suspended from gallery ceiling.

### **April:**

**David Rogers - Opens 1 April 2021** - Intricate detailed work, collected worldwide.

**Water Exhibition** - Open to anyone to take part. Any size, any medium, and subject within the water theme.

### **May:**

**Abstract Exhibition** - Open to anyone to take part. Any size, any medium, and subject within the water theme.



**19 Gover Street, New Plymouth | To exhibit, register, enquire, contact Heidi on 06 757 4278**  
**Open: Wednesday - Monday 10.00am – 4.00pm (closed Tuesdays), Sunday 12 noon – 4.00pm**  
**Facebook/Instagram: [Gover Street Gallery](#) | Email: [goverstgallery@gmail.com](mailto:goverstgallery@gmail.com)**



## The Big Idea

The Big Idea is an online hub for artists of all genres. The Big Idea provides you with daily news updates, the latest jobs and opportunities, events as well as ideas and inspiration from across the creative industries to help you create your own success. The Big Idea is the largest, leading online resource for the arts in New Zealand.

Website: [www.thebigidea.nz](http://www.thebigidea.nz)

## [Ōpunakē Open Studios & Galleries](#) – *click to follow link*



### Waverley Glass Art Studio and Gallery

Artists Lisa and Jimi Walsh show highly collectable glass and ceramic artworks and functional pieces, created onsite in the adjoining workshops.

**49 Wereroa Road, Waverley**

**Open: 8.30 am - 4.00 pm daily, closed Wednesdays**  
**Phone: 027 684 3641 | FB: Waverley Glass Art Studio**



### The Emporium

The Emporium pride themselves on representing local New Zealand artists and stocking high quality, unique homewares and gifts. Rhonda Crawford creates original landscape and botanical paintings in her studio at the rear of the gallery.

**86 Tasman Street, Ōpunakē**

**Open: 10.00 am - 4.00 pm Wednesday - Monday**  
**FB: The Emporium Ōpunakē | Web: [www.theemporiumnz.com](http://www.theemporiumnz.com)**

Would you or your group like to have information included in the next edition of  
**Te Tohu a Toi – STATE OF THE ARTS?**

Please send concise text and photographs for the Winter Edition (June, July, August 2021) to:  
Michaela Stoneman, Arts Co-ordinator: [michaela.stoneman@stdc.govt.nz](mailto:michaela.stoneman@stdc.govt.nz)

**Send information by:**

**Monday 24 May 2021**

**Publish date:**

**Tuesday 1 June 2021**

To unsubscribe to *State of the Arts*, please [email Unsubscribe](#) in the subject line.