

# state of the arts

South Taranaki Arts Bulletin # 36

Winter 2019

| Art News

| Opportunities

| Exhibitions

| Art Events

Haere mai

Welcome to our winter edition of *State of the Arts*.

In May I co-hosted a fantastic **Arts on Tour NZ** show at the iconic Pātea Māori Club. Well known Aotearoa musician and activist Moana Maniapoto was accompanied by her talented band to perform 'My Name is Moana', a performance tribute to the ocean. Spanning New Zealand history and environmental issues through music, hilarious anecdotes and familiar songs, the full house of all ages were highly entertained. It's great to have the opportunity to offer shows of this calibre within our rural towns. We are also bringing 'The Carnivorous Plant Society' to Ōpūnake's Everybody's Theatre in July, a high energy group of musicians from Auckland, complete with an animated backdrop. Subsidised ticket prices and cheap student tickets will make this a fun night out for everyone.



*Moana Maniapoto and Cadzow Cossar performing at the Pātea Māori Club in May*

The last round of the **South Taranaki Creative Communities Scheme** attracted a record 20 applications. This was great to see, a true indicator of a thriving and active arts community. Creative NZ are increasing funding across the country within all regional areas, which will enable us to support and fund more projects in the future. If you have any queries about this funding, would like to talk your project through or need help with the application, please feel welcome to get in touch so we can support you through the process.

We celebrate **Puanga**, the Māori New Year in South Taranaki in June. This is a time for manaakitanga, to share and present offerings to others. Puanga is a time to wānanga, to restore faith and hope for the future, a time for whanaungatanga, to be with others, share stories and kai, and celebrate who we are. As well as marking the beginning of a new year, it also signals other new beginnings. Traditionally Puanga is the time to plant trees, prepare the land for planting crops and renew associations with whānau, family and friends. The New Year is also a good time to reflect on your place in the world, to reawaken old skills or try out new ones and set new goals.

We are lucky to have art, theatre, cultural and heritage groups in many of our towns in South Taranaki. I encourage you to get into it, join up, get involved, make real connections with people and above all, enjoy yourself ☺

Ngā mihi,

*Michaela*

Michaela Stoneman | Arts Co-ordinator | South Taranaki District Council | 0800 111323  
[michaela.stoneman@stdc.govt.nz](mailto:michaela.stoneman@stdc.govt.nz) | [www.southtaranaki.com](http://www.southtaranaki.com)

## South Taranaki Creative Communities Funding

The second round of the Creative Communities Scheme for 2018/19 closed in March and 20 applications were considered by the Allocation Committee on 15 April. A total of \$17,017.38 was distributed to the following successful applicants:



- *Cath Sheard* - \$889 for her Gelli Printing Workshops to be held in South Taranaki
- *Mokoia Primary School* - \$630 for their Small Schools Art Day project involving 6 schools on 15 May
- *Stratford Camera Club* - \$765 for their Photographic exhibition and workshops
- *Creative Fibre Stratford / Eltham* - \$320 for their Fibre Fantastic Exhibition
- *The Friends of Hawera Parks* - \$1,065 towards the horticultural display in King Edward Park as part of the PowerCo Garden Festival
- *Taranaki Arts Trail Inc.* - \$1,015 towards the Taranaki Arts Trail 2019
- *Eltham Youth Health & Development Trust* - \$945.91 towards their Portal view Rotokare Sanctuary Mural created by E-Town Youth
- *Hawera Art School and Creative Space* - \$1,0345.55 towards their 3D Sculpture and Ceramic Workshop
- *Project Reef Life – South Taranaki Underwater Club* - \$2,765.00 towards the Patea Pou – Public Art Installation
- *Marianne Muggeridge* - \$1,185 towards life drawing tuition and sessions
- *Dora Baker* - \$217.92 towards establishing a Patea Community Art Group
- *Toi O Taranaki Ki Te Tonga* - \$3,265.00 towards increasing access to Toi Maori within South Taranaki
- *Hawera High School Art Dept.* - \$420 towards the Hawera High School Senior Art Exhibition to showcase student portfolio work
- *Paepae In the Park Committee* - \$2,000 towards the Paepae In the Park Music Festival
- *Inquisitive Minds School Holiday Programme* - \$500 towards a School Holiday Programme in Waverley

Do you have a project in mind that will get people involved in the arts or strengthen your local arts sector? The Creative Communities Scheme, administered by the South Taranaki District Council on behalf of Creative New Zealand, aims to foster an environment that supports creative expression and provides greater opportunities for people to enjoy the arts, wherever they live and whatever their circumstances. Individuals and groups may apply for funding for projects that:

- Create opportunities for local communities to engage with and participate in arts activities
- Supports the diverse arts and cultural traditions of local communities, enriching and promoting their uniqueness and cultural diversity
- Enable and encourage young people (under 18 years) to engage with and actively participate in the arts.

The next Creative Communities Scheme funding round opens on **30 July** and closes on **10 September** for projects that do not start before **1 October 2019**.

**Application Forms** and a **Guide for Applicants** can be requested from the STDC Arts Co-ordinator, Council's Administration Building on Albion Street, Hawera or downloaded under the [Funding and Grants Support](#) section of the STDC website. Feel free to contact [Michaela](#) or [Jacinta](#) for any questions or support for your application prior to the due date.

For further information, email [funding@stdc.govt.nz](mailto:funding@stdc.govt.nz) or phone 0800 111 323 or 06 278 0555



## Ronald Hugh Morrieson Literary Awards 2019

**Short Story & Poetry Workshops: Saturday June 15 2019**

**Competition closes: 16 August 2019**

Two New Zealand Literary giants will judge this year's Ronald Hugh Morrieson Awards. South Taranaki writers will be extremely excited to learn from this year's short story judge, Dame Fiona Kidman, and poetry judge James Brown. Kidman is a leading contemporary novelist, short story writer and poet. Kidman has won

numerous awards (including the 2019 Ockham Awards) and was awarded an OBE and a Dame Companion of the New Zealand Order of Merit for her services to literature. Brown is a poet and short fiction writer. His first book of poems *Go Round Power Please* won the Jessie Mackay Best First Book of Poetry Award. Brown has been a finalist in the Montana New Zealand Book Awards three times. Please register for workshops. All events are free, all are welcome to attend.

**Author Chat, Dame Fiona Kidman: Wednesday 12 June 2019 - 10.30am Eltham LibraryPlus, 7.00pm Hawera LibraryPlus**

**Friday 1 November 2019 - 10.30am Waverley LibraryPlus, 2.00pm Manaia LibraryPlus**

**James Brown Poetry Evening: Thursday 13 June 2019 - 7.00pm Hāwera LibraryPlus**

For more information or to register for a workshop, visit the website: [www.rhmorriesonawards.com](http://www.rhmorriesonawards.com)

## Arts on Tour - Carnivorous Plant Society

Everybody's Theatre, 72 Tasman Street, Ōpūnake  
Doors open 6.30pm, starts 7.00pm Tuesday 9 July 2019  
Tickets: \$10 Adults, \$5 kids/students (under 18)

Carnivorous Plant Society are some of Auckland's brightest musicians combined. With a spell-binding backdrop of custom animations penned by band-leader/multi-instrumentalist/genius

Finn Scholes they use a plethora of instruments to perform what can only be described as 'Mexican Fantasy Music'. There will be two forty-minute sets of music that will leave your mind blown and you clapping for more.

*"What cleverness. What shining, uplifting delight...I can't recommend this glorious treat highly enough. It's magic! Go!"* – John Campbell, Radio NZ

*"They make a fantastic sound... Full of robot bartenders, scary sand-creatures in the desert. There's a man with a spare face growing out of his shoulder which is a bit alarming... It's fantastic!"* – Grant Smithies

Presented by Arts on Tour NZ. Supported by South Taranaki District Council. Refreshments available at Theatre Shop.



Tickets on sale at Ōpūnake LibraryPlus from 10 June 2019 | Enquiries: Email [michaela.stoneman@stdc.govt.nz](mailto:michaela.stoneman@stdc.govt.nz)  
Website: [www.carnivorousplantsociety.com](http://www.carnivorousplantsociety.com)



## Taranaki National Art Awards 2019

Sandfords Events Centre, Tasman Street, Ōpūnake

Entries Close: 20 September 2019

Awards Ceremony: 7.00 pm Friday 1 November 2019

Exhibition: 10.00 am - 4.00 pm, 2 - 9 November 2019

Entries are now open for this annual national visual arts competition. Cash prizes totalling over \$10,000 for winning and highly commended artworks are offered in seven categories: Painting, Taranaki Artists, 3D, Works on Paper, Fibre Art, Tō Taranakitanga and Photography. Entry is \$20 per artwork, artists can only enter each category once but can enter multiple categories. This year is the eighteenth anniversary of this event, which would not be possible without the generous support of sponsors and the Ōpūnake community. All entries are displayed in the exhibition and most works are for sale, offering a unique opportunity to purchase original artworks. The exhibition coincides with the regions garden festivals. Artists are now able to enter online and regular updates and news are featured on the Facebook page.

*Winner of 2018 Works on Paper Award, Matthew McIntyre-Wilson*

Facebook: Taranaki National Art Awards

Please visit the website to find out more and enter: [www.taranakiartawards.co.nz](http://www.taranakiartawards.co.nz)

## Parihaka Puanga Kai Rau Festival

7, 8 & 9 June 2019

Parihaka Papakāinga

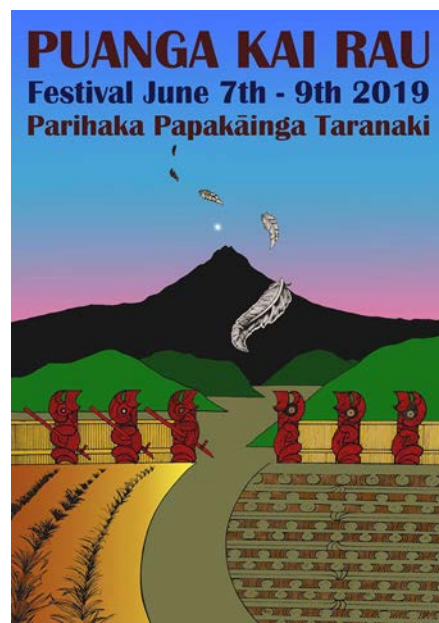
249 Mid Parihaka Road, Parihaka

Puanga (or Rigel in English) is a star constellation that marks the Māori New Year for Taranaki tribes and it's a special time of year to give thanks to our tupuna (ancestors) and to prepare the soil for planting for the coming year.

All are welcome to gather at Parihaka Pa to celebrate and learn. Enjoy music, gardening, kai, workshops, art installations, weaving and other activities throughout the festival. The event is drug and alcohol free and visitors are welcome to stay on the marae.

For more information and full programme visit: [www.puanga.com](http://www.puanga.com)

Facebook: Parihaka Puanga Kai Rau Festival



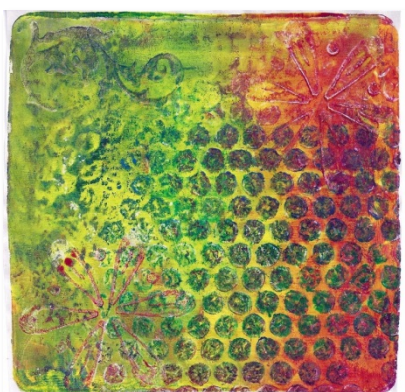
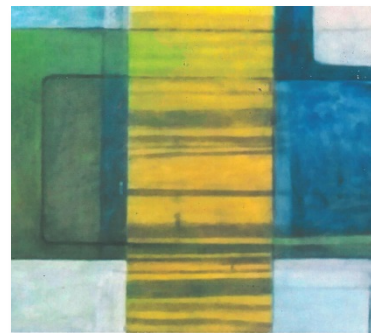
## Art Short Courses – WITT

Western Institute of Technology (WITT) art tutors Ged Guy and Ian Clothier are offering short art courses in Hāwera and New Plymouth. Courses include drawing, painting, screen printing, construct a lightbox, drawing portraits, life drawing, zines, video poetry, and more.

**Drawing Made Easy (N.P):** 4.00 pm - 6.00 pm Thursday 6 June 2019. \$30 p/p

**Painting Made Easy (Hawera):** 10.00 am - 1.00 pm Tuesday 11 June 2019. \$55 p/p

For more information or to register: Email [g.guy@witt.ac.nz](mailto:g.guy@witt.ac.nz)



### Gelli Print Classes

**Hāwera:** Hall Lounge, Albion Street, Hāwera

7.00 pm - 9.00 pm Wednesday 12 June, 10 July & 14 August 2019

**Ōpūnake :** Town Hall, Domett Street, Ōpūnake

7.00 pm - 9.00 pm Thursday 6 July 2019

**Waverley:** Community Centre, Chester Street, Waverley

7.00 pm - 9.00 pm Wednesday 17 July and 21 August

An introduction to Gelli Printing, a quick and easy creative technique to make your own printed papers. No prior experience required. Learn the basics, including using stencils and work up to more advanced mark-making. In Waverley and Hāwera the follow-on classes build on skills learned in the initial classes, but can be taken on their own. Cath Sheard is a mixed-media artist; she has been teaching art and craft for 20 years and believes regular art time is good for the soul. Cost: \$15 per night, all materials supplied. Can be messy, please wear old clothes. See Cath's work at [www.cathsheard.wordpress.com](http://www.cathsheard.wordpress.com)

To book email [cathsheard@xtra.co.nz](mailto:cathsheard@xtra.co.nz) or Text 021 247 8193

## Taranaki Arts Trail 2019

8, 9 & 10 June 2019

Established in 2014, the Taranaki Arts Trail provides the public with the unique opportunity to meet with over 70 artists in their studios and workshops. Ultimately, the aim of the Taranaki Arts Trail is to build a greater understanding in the community of the processes involved and the skills required in creating a work of art. Admission and brochures are free for visitors. All artists feature one work in an group exhibition at Percy Thomson Gallery in Stratford.

**Pātea:** 5kms north of Pātea in rural Kakaramea, **Celeste Cole** collaborates with her husband Mike Cole to create intricate, mandala style works on hand-turned wood. A visit to this beautiful hand-built studio is pure magic.



**Ōpūnake:** **Rhonda Crawford** has created a studio at the back of Kete Aronui Gallery. The space has lots of natural light and allows creativity to flow. She uses acrylic paint to describe landscapes, weather and floral aspects in her paintings.

**Eltham:** **Maree Liddington's** studio offers a unique insight into the world of tapestry weaving. A weaver for 30 years, see her two floor looms in action, creating one-off designs with wool and hand-dyed fibres. She has recently also started exploring Saori, Japanese free-style weaving. **Lindsay MainDonald** is a mountaineer and traditional landscape artist. Subjects include Mount Taranaki, portraits, waterfalls and scenes of Nepal. Visit his picturesque garden studio.

Open: 9.30 am - 4.30 pm daily | Website: [www.taranakiartstrail.co.nz](http://www.taranakiartstrail.co.nz) | Facebook: Taranaki Arts Trail

## Taranaki Partner Dance Community

Have fun and learn to dance a variety of partner dance styles, suitable for social and club dancing. The Taranaki Partner Dance Community runs classes in Hāwera and New Plymouth for children, teens and adults. No experience or dance partner required. Classes are designed to teach dancers to freestyle, to identify different beats, to learn the features of each dance style and to dance the right style suited for a particular music. The classes include moves, partner work, techniques & freestyle time. Classes, workshops, private lessons, wedding dances and choreography are offered at a non-profit & low cost to support and grow Taranaki's local and rural dancing communities. Hāwera classes are held on Tuesday and Thursday nights at the Hāwera Presbyterian Centre on 35 Argyle Street.



Full details and registration online, visit: [www.taranakidance.co.nz](http://www.taranakidance.co.nz) or contact Maria on 027 727 1749  
Facebook: Taranaki Partner Dance Community



## Hāwera Writers' Group

**Meet: 7.00 – 8.30pm, usually 4<sup>th</sup> Wednesday each month**  
**Hāwera Art School & Creative Space, 20 Union Street, Hāwera**  
A group of locals writers get together to share with others – on writing, researching, events, competitions, goals or dreaming about writing. All welcome. \$5 per person to contribute to venue.

For enquiries and information, contact Maakare Edwards: Email [maakere@gmail.com](mailto:maakere@gmail.com)

## Hāwera Repertory News



### **Annie**

**7 - 15 June 2019**

**Hāwera Memorial Theatre, Albion Street, Hāwera**

Annie is the perfect family friendly musical. Based on the popular comic strip by Harold Gray, the multi-award winning musical is coming to Hāwera in 2019. Directed by Shaun Campbell, the show features Charles Pittams as musical director and Michelle Glover as choreographer. Around 100 adults and children make up the cast and crew of Hāwera Repertory's upcoming \$100,000 production of *Annie*, which will take to the stage in June. The cast includes 16 families with two or more members involved, and six families who will have either three or four members either on or off stage helping with hair and makeup or front of house.

Check performance teams and schedules [here](#). Tickets are on sale now, either [online](#) or from TicketDirect.

For more information contact [hawerarepitory@gmail.com](mailto:hawerarepitory@gmail.com) or visit [www.hawerarep.org](http://www.hawerarep.org)

## Pipe Organ Recitals in Hāwera

**4.00 pm, Sunday 2 June 2019**

**Wesley Methodist Church, Regen Street, Hāwera**

**Admission: \$15 Adults, \$10 Concession and under 18 years free.**

**Purchase tickets at the door.**

New Plymouth based professional musician Christopher Luke will present organ recitals at the Wesley Methodist Church in Hāwera this year. The 1916 Alfred Brake pipe organ is historic and unique to New Zealand, listed with the New Zealand Organ Preservation Trust with a Category 1 certificate. Roy Tankersley will precede the performance with a presentation on the history of the organ. The following series of recitals are funded by the TSB Community Trust:

**Wednesday 24 July, Wednesday 25 September, Wednesday 27 November and Wednesday 18 December 2019.**

These recitals will be at 11.15am and will run for a 45-55 minutes duration. Gold coin donation entry, refreshments following the recital. All welcome.



For more information contact Christopher Luke: Email [music@taranakicathedral.org.nz](mailto:music@taranakicathedral.org.nz)



## South Taranaki – Puanga Events

Check your local LibraryPlus for the 2019 Puanga Calendar of Events in South Taranaki to celebrate the Māori New Year this June. Featuring talks, Cuppa Korero, art and craft sessions, exhibitions and star gazing at Hāwera Observatory.

### Poi Making Workshops

**10.00 am – 12.00 pm & 3.00 pm – 5.00pm, Hāwera LibraryPlus**

Join local Māori artist Rhegan Brooks (Ngaruahine/Te Whanau-A-Apanui) to create your own set of poi to take home. Based on the traditional style of short poi, you will use colourful fabrics to create a contemporary twist. All ages and abilities welcome. Rhegan will also display a small selection of her artwork at Hāwera LibraryPlus for the month of June.

---

## Hāwera Memorial Theatre Trust

The Hāwera Memorial Theatre Trust formed in 2011, to take on the role of kaitiaki (guardian) of Hāwera's community theatre, working alongside the South Taranaki District Council. Generous public donations, grants and other fundraising activities have enabled significant improvements to the theatre. You can become a *Friend of the Theatre* to support the work of the trust - forms can be downloaded [here](#). *The Theatre Trust Singers* are a community choir of 30 singers from Hāwera and surrounding towns. Formed in 2018, the choir is led by Peter Copeland and pianist Claudia Bluett, supported by Judy Brown and Megan Te Ahuahu. Public performances include the opening of the VC Commemoration Gardens, Carols in Naumai Park and the Trust's end of year variety show. The choir are keen for more singers to join, especially more male voices. Rehearsals are on Tuesday nights from 7:00 pm - 9:00 pm at the theatre.



### **Let's Twist Again**

**23 – 30 November 2019**

Enjoy the songs of the 60's by Chubby Checker, The Four Seasons, The Everley Brothers, The Beatles and more. Directed by Judy Brown and Megan Te Ahuahu. Bookings open in August 2019, through TicketDirect and the South Taranaki i-SITE in Hāwera.

**To join the choir, contact: Judy Brown on 06 278 5834 or Email: [judy-brown@xtra.co.nz](mailto:judy-brown@xtra.co.nz)  
Email: [haweratheatrefriendstrust@weebly.com](mailto:haweratheatrefriendstrust@weebly.com) | Website: <https://haweratheatrefriendstrust.weebly.com>**

---

## Hāwera Art School & Creative Space



**Expressions of interest:** The School are currently seeking local individuals or groups parties that are interested in taking over the running of this established and thriving creative space from 2020. Please phone Erryn on 027 361 6930 for full information and details.

Established for the benefit of the local community and wider District, an inclusive space designed to nurture and support individuals and groups, from beginners to established artists. Offering weekly art classes by experienced tutors and School Holiday Programmes, the space can also be used for local artist's as a studio or as a venue to run creative workshops. The School encourages input and involvement of local artists, feel free to call in and meet the team during class hours to find out more.

### **Adult Art Classes**

**Tuesdays 6.30 - 8.30pm during school terms.**

\$20 per class/\$200 per term. Gold card & Community Services card holders \$15 per class or \$150 per 10 week term. Fee includes all materials except for canvas and frames.

### **Kids Art Classes**

**Tuesdays 3.30 - 5.00pm during school terms. Ages 10 – 13 years**

**Thursdays 3.30 – 5.00pm during school terms. Ages 5 – 10 years**

\$8 per class/\$80 per term, includes afternoon tea and basic materials.

**20 Union St, Hāwera | Open: Tuesdays & Thursdays during class hours  
Phone or text: 027 361 6930 | Facebook: Hāwera Art School | Email: [haweraartschool.creativespace@gmail.com](mailto:haweraartschool.creativespace@gmail.com)**

## The Village Gallery - Winter Exhibitions



### **Members Mid-Year Exhibition**

**4 – 28 June 2019**

Friends of The Village Gallery Members' Exhibitions feature a great variety of artworks, including paintings in acrylic, watercolour, oil, pastel and mixed media, pottery, photography, fabric and fibre art, jewellery and novelty items, cards and prints. Something for everyone, a 'cash and carry' exhibition.

The Gallery will be open for longer hours (9.30 am to 4.30 pm) on 8, 9 and 10 June while the Taranaki Arts Trail is running. Although we are not listed in the brochure as 'A Place of Interest' due to a change in the criteria for the Trail, we welcome art lovers to call in to view the work of our Members when they are passing through Eltham.

### **Fibre Fantastic**

**1 – 26 July 2019**

**Opening Event: 2.00 pm Sunday 30 June 2019.**

An exhibition of wearables and fibre art to warm you in the middle of winter. This is a combined exhibition of Central and South Taranaki Creative Fibre groups. Thanks to *South Taranaki Creative Communities* for funding assistance.

### **Hawera Art Club**

**29 July – 23 August 2019**

### **Papatuanuku: Treasure of the Earth**

**26 August – 20 September 2019**

Two Eltham artists, Ashlee Robinson and Ivan Toopi, bring their fresh new styles of art, including paintings, mixed media, illustration and carvings from wood and pōnamu.

**The Village Gallery, 166 High Street, Eltham Open: Monday - Saturday 10.00 am - 3.00 pm**

**Facebook: Village Gallery Eltham NZ | Email: [villagegalleryeltham@gmail.com](mailto:villagegalleryeltham@gmail.com)**

## Aotea Utanganui – Museum of South Taranaki

### **Rarely Seen: Photographs of the Extraordinary**

**Runs until 31 August 2019**

This National Geographic International touring exhibition. Visitors will experience some of the world's most astounding phenomena. Inspired by the book of the same name, the exhibition features 50 striking images shot by some of the world's finest photographers of places, events, natural wonders and man-made heirlooms seldom seen by human eyes. Introduced by National Geographic photographer Stephen Alvarez, this exhibition captures unbelievable moments, natural wonders, and extraordinary objects from the far reaches of the globe.



### **David Sinfield: Moving Images**

**Runs until 31 August 2019**

These moving images works are contemplations on memory and loss at the Pātea Cool Stores and Freezing Works. David's practice-led research project, *Typographical Poetics*, is concerned with typographical poetics and the eroding forces of time, materiality and the elements. Using the abandoned Pātea Freezing Works in Taranaki as a site of consideration, it explores how an interface between what is written, what is thought, and what is lost, might operate as a form of typographic film poetry. In so doing, the thesis creatively explores the poetics of palimpsest. Through layers of time and recollection, it fuses photography, film, sound and typographical thought, to ask "What is the potential of spatial-temporal typography to speak for the evocative nature of vacated sites of labour?". Developed through a series of three typographical poems, the project is concerned with subjective response. It questions the potentials of typography as a nuanced and temporal voice that might be employed to speak for the poetics of loss.

### **Puanga Rising: Public Talk**

**10.00 am Saturday 1 June 2019**

Kere Taputoro is at the Museum to present her view on Te waka o Tamarereti (The Milky Way). She will be imparting her knowledge on the stars, the Maramataka; anything and everything concerning this rich kaupapa. Come along and learn about Puanga and Matariki. All are welcome. Please bring a plate for a shared kai afterward.

**Aotea Utanganui - Museum of South Taranaki, 127 Egmont Street, Pātea | Phone: 06 273 8354**

**Facebook: Aotea Utanganui | Email: [museum@stdc.govt.nz](mailto:museum@stdc.govt.nz) Open: 10.00am - 4.00pm Monday – Saturday**

## Lysaght Watt Gallery – Winter Exhibitions

### **Art & Folios from Hāwera High School Students**

**Runs until 8 June 2019**

Celebrating our young local talent in the realm of visual art. Includes selected 2018 NZQA folios and photography.

### **Taiho**

**14 June – 6 July 2019**

Toi Taranaki ki te Tonga artists celebrate the reappearance of Puanga through their artforms. The exhibition name refers to the stars we watch for and to the artists whose work enlightens our minds. Taiho – to emit rays of light.

### **Ian Axtell & Lester Earl**

**8 July - 3 August 2019**

Two artists reunite to create a third joint exhibition. Axtell moved from Auckland to Taranaki in 2011 having established himself as an artist with works held in both corporate and private collections in New Zealand and overseas. His present work is best described as abstract-landscape, however his minimalist and impressionist past sometimes becomes evident. Earl creates evocative landscapes whilst Ian experiments with themes drawn from the Taranaki environment.

### **Fusion of Colours**

**5 – 31 August 2019**

Brenda Cash & Henriette Reason present a joint exhibition in a range of expressive mediums.



*By Gabrielle Belz, Taiho exhibition*

**Lysaght Watt Gallery 4 - 6 Union Street, Hāwera**

**Website: [www.lysaghtwattgallery.co.nz](http://www.lysaghtwattgallery.co.nz) | Facebook: Lysaght Watt Gallery**

**Open Monday - Friday 10.00 am - 4.00 pm Saturday 10.00 am - 1.00 pm | Phone 06 278 7611**

## Quirky Fox Gallery

*Dragon by Soju Shots*



### **Least Concern**

**From Wednesday 5 June 2019**

Asher Boardman's mixed media works contrasts harsh geometric shapes with organic forms to illustrate the impact and confusion that human interference has on nature from the perspective of the animals.

### **Muse**

**From Monday 8 July 2019**

Three of Quirky Fox's most popular artists join to celebrate it's seventh birthday; combining loose watercolour with tight detailing.

Quirky Fox's August exhibition will showcase the detailed pointillism works of artist Rachelle Sutherland. Exploring the themes of strength and vulnerability, the evocative works are full of contrasts.

**Quirky Fox, 205a High Street, Hāwera | Phone: 06 2786909**

**Open: Monday - Friday 9.30 am - 5.00 pm Saturday 10.00 am - 12 noon**

**Facebook: Quirky Fox | Website: [www.quirkyfox.co.nz](http://www.quirkyfox.co.nz)**

## Creative Compass

### **Open Call for Emerging Artists**

Creative Compass aims to help emerging New Zealand artists navigate the art world. Our first annual juried exhibition is open to all emerging artists including sculptors, jewellers, traditional artists, digital artists and photographers. 30 artists will be selected to exhibit their work at Deciduous Gallery, Tirau and online at Creative Compass. In addition to having your work shown at a professional gallery, you can choose to have your work judged by a panel of professional artists and win three months one-on-one mentoring with Creative Compass (worth \$600).



**Find out more or apply to take part at [www.creativecompass.nz](http://www.creativecompass.nz)**



## Kete Aronui

Kete Aronui is an online store and gallery that showcases locally created art, design and gifts by emerging and established Taranaki makers. The space is constantly evolving with new works of art, sculpture, jewellery, ceramics, prints, greenstone, cards, artisan food and coffee on display. Our focus on quality items from our region of Taranaki allows us to build great longstanding relationships with our artists. Storytelling is at the heart of creativity and we take the time to get a deep understanding of our artists and their works which we then share with our customers in-store and online. Contact Kete Aronui to hear notifications on upcoming workshops, events and exhibition highlights.



**Kete Aronui, 86 Tasman Street, Ōpūnake | Website: [www.ketearonui.co.nz](http://www.ketearonui.co.nz)  
Open: 10.00am - 4.00pm Wednesday - Sunday Phone: 021 951 816 | Facebook: [Kete Aronui Gallery](https://www.facebook.com/KeteAronuiGallery)**



## Everybody's Theatre

### Boutique Nights - First Sunday of the Month:

Get some friends together and enjoy a wine or beer with some tasty treats at our Boutique Nights. Check the website for full details of upcoming screenings. \$28 per person. Ticket includes movie, one complimentary drink and snacks. Bar facilities available, no BYO.

Tickets available from Sinclair Electrical & Refrigeration Ltd, Ōpūnake

**Everybody's Theatre, 72 Tasman Street, Ōpūnake**

**Website: [www.everybodystheatre.co.nz](http://www.everybodystheatre.co.nz) | Email [everybodystheatre@gmail.com](mailto:everybodystheatre@gmail.com)**



## Life Drawing Group: Ōpūnake

**7.00 – 9.00pm Tuesday Evenings**

**Kete Aronui Studio, 86 Tasman Street, Ōpūnake**

Regular open sessions of life drawing with a model, with structured drawing time sequences. All welcome to join this small group of artists. Please bring paper and drawing equipment.

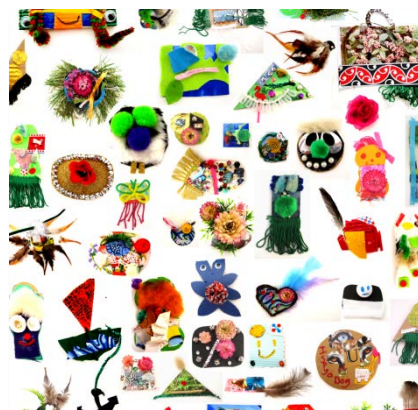
\$10 waged/\$5 unwaged per session. All welcome.

**For more information contact: Marianne or Roger 06 274 5713**

## Redecorating Taranaki

*Redecorating Taranaki* is a project to create new artefacts celebrating our community. The Puke Ariki Heritage Collection contains taonga, war medals, civic awards, sports trophies and medallions. These objects tell stories about our heritage, who we were as a community and what values were important in the past.

Project leaders, Jen Laracy and Sam Kelly from The Jewel and the Jeweller in New Plymouth invite the Taranaki community to share their voice through the act of making and story-telling to help discover a new narrative. The stories and images collected will form the inspiration for a special set of new artefacts that will be displayed at Puke Ariki in 2020. You can participate by completing a worksheet or by joining or hosting a free badge-making workshops – check the website for further details.



### **South Taranaki LibraryPlus Badge Making Sessions with artist Jen Laracy – School Holiday Programme**

**Wednesday 17 July: 10.30 am – 11.30 am: Manaia LibraryPlus**

**2.00 – 3.00 pm: Ōpūnake LibraryPlus**

**Thursday 18 July: 10.30 am – 11.30 am: Eltham LibraryPlus**

**1.30 pm – 2.30 pm: Kaponga LibraryPlus**

All welcome at these sessions, all ages and abilities. Materials supplied, free. Parents welcome to join with their children.

**Website: [www.redecoratingtaranaki.org](http://www.redecoratingtaranaki.org) | Instagram: [redecorating\\_taranaki](https://www.instagram.com/redecorating_taranaki) | Facebook: [Redecorating Taranaki](https://www.facebook.com/RedecoratingTaranaki)**

## Percy Thomson Gallery - Winter Exhibitions

### **Taranaki Arts Trail Exhibition**

**24 May - 16 June 2019**

More than 80 Taranaki artists open their studios to the public on the weekend of June 8 / 9 / 10. Visitors will be treated to an up-close and personal experience. Whether it's a purpose-built studio, workshop or dining room table, their space is open to anyone who wants to lift the lid on how all types of art is created.

The exhibition features one piece of work from all registered artists on the Trail. It is an excellent opportunity for Trail visitors to view each artist's work to decide which studios they would like to visit.

### **Moments – Susie Harrop & Michelle Rowland**

**21 June - 14 July 2019**

These two Taranaki artists, and good friends, capture moments in time—a face, a scene or a feeling. Harrop is a retired coastal Taranaki farmer, with an art studio in a retired cowshed. A realist painter who captures moments in time of people and places, she shows everyday NZ life as it is and was, as well as portraying Māori legends. Rowland is a Stratford artist who is fascinated with colour and texture who also paints in a realistic style. Her work is focused on birds, animals, portraits and landscapes reflecting her Taranaki home and surroundings.

*Painting by Susie Harrop*



### **Taranaki Artocracy**

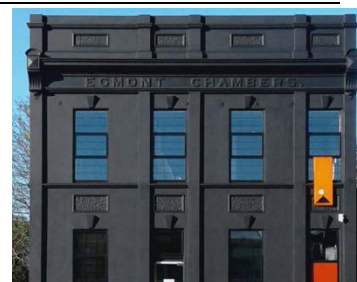
**19 July - 11 August 2019**

Curated by New Plymouth artist Jan Huijbers, this exhibition will feature works by 52 artists, including Michael Smithers, Marianne Muggeridge, Dale Copeland, Paul Hutchison, Filipe Tohi and Roger Morris. Added to this fine art mix are a number of relatively new emerging artists, who have caught Huijber's attention.

**Percy Thomson Gallery, Miranda Street, Stratford | Director: Rhonda Bunyan | Phone 06 765 0917  
Open: Monday - Friday 10.30 am - 4.00 pm Saturday - Sunday 10.30 am - 3.00 pm  
Website: [www.percythomsongallery.org.nz](http://www.percythomsongallery.org.nz) | Facebook: Percy Thomson Gallery**

## Fenton Street Art Collective

Fenton Street Art Collective is a gallery space that offers great coffee and boutique small batch gin. The old Egmont Chambers building was restored by owners Jo Stallard and Stuart Greenhill. Jo is a painter, working mainly in portraiture and Stuart is a writer. Offering good food, diverse artworks by New Zealand artists and a professional service. Special culinary events and gin tasting. Studio tours and commissions welcome.



**11 Fenton Street, Stratford | Facebook: Fenton Street Art Collective | Phone: 021 0299 2839  
Open: 8.00am – 3.00pm Mon – Thurs, 8.00am – 9.00pm Friday, 9.00am – 3.00pm Weekends |**



## Govett-Brewster Art Gallery/Len Lye Centre News

Ongoing: **Mikala Dwyer: Earthcraft**

**Len Lye: Art That Moves**

Until 21 July: **Open Collection: He Rere Ke – Different Pathways**

**Nicolás Paris: ko ngā herenga kei waenga i a tātou – lo que nos une – what connects us**

**Projection Series #13: Suspended Agency, An Installation by Peter Wareing**

**Open Window – Shannon Novak: Sub Rosa**

August – November 2019: **Len Lye and Elizabeth Thomson: Waking Up Slowly**

**Len Lye: Art That Moves**

**Yuichiro Tamura: Milky Mountain / 裏返りの山**

**Fiona Clark: Raw Material**

*Mikala Dwyer, Universe.*

Check the website for talks, tours, workshops, hands-on art making and cinema screenings offered.

Admission: Free for New Plymouth District residents, Gallery Friends and Under 16's (ID & proof of address required)

Seniors \$10 | Everyone else \$15. Sign up to be a Gallery Friend at [govettbrewster.com/support/friends](http://govettbrewster.com/support/friends)

**Govett-Brewster Art Gallery and Len Lye Centre, Queen Street, New Plymouth | Phone: 06 759 6060  
Open: Seven days 10.00 am - 5.00 pm. Closed Christmas Day. Late night cinema 7.00 pm Thursdays  
Website: [www.govettbrewster.com](http://www.govettbrewster.com) | Facebook: Govett-Brewster Art Gallery**

## Puke Ariki - Winter Exhibitions



### **Whare Kahurangi: 100 Years of Collecting Until 6 October 2019**

In August 1919 the Taranaki Museum opened its doors for the first time. *Whare Kahurangi* celebrates 100 years of collecting our region's history, from the foundation gift of Māori taonga by William Henry Skinner through to the present day. Meaning 'house of treasured possessions', *Whare Kahurangi* reflects both the precious objects on display and Puke Ariki as a place of community, education and wonder.

### **Guided historical walks**

#### **Available daily (with 24 hours notice)**

Join us for a 90 minute historical walk where an experienced local guide will take you on a walk back in time through the central city area relating events, developments and anecdotes. \$15 per person (under 16s are free), wheelchair accessible. For a full list of lectures, school holiday programmes, events, workshops and regular groups, please visit the website.

**Puke Ariki, 1 Ariki Street, New Plymouth | Phone: 06 759 6060**

**Website: [www.pukeariki.com](http://www.pukeariki.com) | Facebook: Puke Ariki: Museum-Library-Visitor Information**



## Virtual TART News

Virtual TART is an online gallery showcasing work by a wide range of Taranaki artists and featuring new exhibitions each month. Facilitated by artist Dale Copeland, people can sign up to receive regular newsletters offering opportunities to exhibit, local and international opportunities and other creative projects to participate in.

**For more information, visit: [www.virtual.tart.co.nz](http://www.virtual.tart.co.nz)**

## North Taranaki Arts Society Exhibition

### **The Winter Show 22 June - 28 July 2019**

Presenting a range of works by Members of the North Taranaki Arts Society in the historic Gables Gallery, nestled within Brooklands Park.

**Gables Gallery, Brooklands Park Drive, New Plymouth  
Open: 1.00 pm – 4.00 pm Friday – Monday**

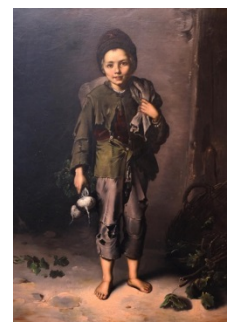


## Koru Galleries News

Koru Galleries are excited to announce they are reopening in part of the old TSB building in New Plymouth, thanks to the generosity of David and Wayne Brownson.

Koru's cooperative has a diverse range of contemporary art featuring Taranaki artists while also hosting guest artists from around New Zealand. Koru Galleries offers city based street level exhibition space for hire. Koru on Koru will feature Lester Earl, Fay Looney and Chris Wells during the Taranaki Arts Trail weekend, while Koru on Devon will feature Linda McFetridge.

Koru on Koru opens again for weekends and proudly displays works from its collective alongside a selection from a private collection for sale including works by Darcy Nicholas, Henryk Szydowski and Barbara Blackmore Fowler.



**Koru on Koru 283 Koru Road, Oakura  
Koru on Devon, 12 Devon St West, New Plymouth (formally Brownson Jewellers)  
Contact: Fay Looney 021 410 030 | Facebook: Koru on Koru/Koru on Devon**

## Franklin Arts Festival 2019

One of Auckland's premier art events open to all New Zealand artists, offering over \$30,000 in prizes and offering over 800 artworks for sale. For sections, terms and conditions and online entry, visit: [www.franklinartsfestival.co.nz](http://www.franklinartsfestival.co.nz)



### The Big Idea

The Big Idea is an online hub for artists of all genres. The Big Idea provides you with daily news updates, the **latest jobs and opportunities**, **events** as well as **ideas and inspiration** from across the creative industries to help you create your own success. With over 50,000 members; 1.4 million page views, over 26,000 social media followers and 1.8 million email newsletters sent each year, they are the largest, and the leading online resource for the arts in New Zealand and the most effective place to advertise opportunities.

Website: [www.thebigidea.nz](http://www.thebigidea.nz)



Would you or your group like to have information included in the next *State of the Arts*? Please send concise text and photographs for the Spring (September, October, November) *South Taranaki Arts Bulletin* to:

Michaela Stoneman, Arts Co-ordinator: [michaela.stoneman@stdc.govt.nz](mailto:michaela.stoneman@stdc.govt.nz)

**Send information by: Tuesday 13 August 2019**

**Publish date: Friday 30 August 2019**

If you would like to unsubscribe to *State of the Arts*, please [email Unsubscribe](#) in the subject line.

